

After Sales Technical Documentation

Appendix 2 – RAE/RAK-1N

PARTS LISTS

CONTENTS – Parts lists

	Page No
GSM System Module – GE8	3
PCN System Module – GE9	18
PDA Module – GP1	35
User Interface – GK2	42
User Interface – GK2-1	45
Simflex Sub-module – GEM1	47
Mechanical Assy/Parts RAE-1N	48
Mechanical Assy/Parts RAK-1N	49

Note: Common Modules for all versions are GP1 and GEM1

Parts Lists

GSM System Module – GE8

EDMS pn 0200712 Issue 3.19

Item	Code	Description	Value/Type
R200	1430796	Chip resistor	47 k 5 % 0.063 W 0402
R201	1430804	Chip resistor	100 k 5 % 0.063 W 0402
R202	1430788	Chip resistor	22 k 5 % 0.063 W 0402
R206	1430726	Chip resistor	100 5 % 0.063 W 0402
R207	1430726	Chip resistor	100 5 % 0.063 W 0402
R208	1430726	Chip resistor	100 5 % 0.063 W 0402
R209	1430726	Chip resistor	100 5 % 0.063 W 0402
R210	1430796	Chip resistor	47 k 5 % 0.063 W 0402
R211	1430700	Chip resistor	10 5 % 0.063 W 0402
R212	1430804	Chip resistor	100 k 5 % 0.063 W 0402
R213	1430726	Chip resistor	100 5 % 0.063 W 0402
R216	1430778	Chip resistor	10 k 5 % 0.063 W 0402
R220	1430770	Chip resistor	4.7 k 5 % 0.063 W 0402
R222	1430726	Chip resistor	100 5 % 0.063 W 0402
R224	1430079	Chip resistor	47 k 5 % 0.063 W 0603
R230	1430842	Chip resistor	680 k 1 % 0.063 W 0402
R231	1430840	Chip resistor	220 k 1 % 0.063 W 0402
R232	1430804	Chip resistor	100 k 5 % 0.063 W 0402
R233	1430804	Chip resistor	100 k 5 % 0.063 W 0402
R250	1430792	Chip resistor	33 k 5 % 0.063 W 0402
R251	1430764	Chip resistor	3.3 k 5 % 0.063 W 0402
R252	1430115	Chip resistor	2.2 k 1 % 0.063 W 0402
R253	1430764	Chip resistor	3.3 k 5 % 0.063 W 0402
R254	1430734	Chip resistor	220 5 % 0.063 W 0402
R255	1430788	Chip resistor	22 k 5 % 0.063 W 0402
R256	1430764	Chip resistor	3.3 k 5 % 0.063 W 0402
R257	1430778	Chip resistor	10 k 5 % 0.063 W 0402
R258	1430732	Chip resistor	180 5 % 0.063 W 0402
R259	1430804	Chip resistor	100 k 5 % 0.063 W 0402
R260	1430762	Chip resistor	2.2 k 5 % 0.063 W 0402
R261	1430762	Chip resistor	2.2 k 5 % 0.063 W 0402
R262	1430732	Chip resistor	180 5 % 0.063 W 0402
R263	1430778	Chip resistor	10 k 5 % 0.063 W 0402
R264	1430778	Chip resistor	10 k 5 % 0.063 W 0402
R265	1430045	Chip resistor	2.7 k 5 % 0.063 W 0603
R266	1430045	Chip resistor	2.7 k 5 % 0.063 W 0603

Parts Lists

Technical Documentation

R267	1430087	Chip resistor	100 k	5 % 0.063 W 0603
R268	1430087	Chip resistor	100 k	5 % 0.063 W 0603
R270	1430760	Chip resistor	1.8 k	5 % 0.063 W 0402
R271	1430812	Chip resistor	220 k	5 % 0.063 W 0402
R300	1430762	Chip resistor	2.2 k	5 % 0.063 W 0402
R301	1430804	Chip resistor	100 k	5 % 0.063 W 0402
R302	1430804	Chip resistor	100 k	5 % 0.063 W 0402
R303	1430754	Chip resistor	1.0 k	5 % 0.063 W 0402
R304	1430730	Chip resistor	150	5 % 0.063 W 0402
R305	1430804	Chip resistor	100 k	5 % 0.063 W 0402
R306	1430788	Chip resistor	22 k	5 % 0.063 W 0402
R307	1430794	Chip resistor	39 k	5 % 0.063 W 0402
R308	1430804	Chip resistor	100 k	5 % 0.063 W 0402
R309	1430796	Chip resistor	47 k	5 % 0.063 W 0402
R310	1430764	Chip resistor	3.3 k	5 % 0.063 W 0402
R311	1430744	Chip resistor	470	5 % 0.063 W 0402
R312	1430796	Chip resistor	47 k	5 % 0.063 W 0402
R313	1430115	Chip resistor	2.2 k	1 % 0.063 W 0402
R314	1430115	Chip resistor	2.2 k	1 % 0.063 W 0402
R320	1430804	Chip resistor	100 k	5 % 0.063 W 0402
R330	1430722	Chip resistor	68	5 % 0.063 W 0402
R331	1430726	Chip resistor	100	5 % 0.063 W 0402
R332	1430804	Chip resistor	100 k	5 % 0.063 W 0402
R333	1430770	Chip resistor	4.7 k	5 % 0.063 W 0402
R334	1430760	Chip resistor	1.8 k	5 % 0.063 W 0402
R335	1430804	Chip resistor	100 k	5 % 0.063 W 0402
R336	1430792	Chip resistor	33 k	5 % 0.063 W 0402
R337	1430778	Chip resistor	10 k	5 % 0.063 W 0402
R338	1430726	Chip resistor	100	5 % 0.063 W 0402
R340	1430762	Chip resistor	2.2 k	5 % 0.063 W 0402
R341	1430762	Chip resistor	2.2 k	5 % 0.063 W 0402
R342	1430762	Chip resistor	2.2 k	5 % 0.063 W 0402
R343	1430762	Chip resistor	2.2 k	5 % 0.063 W 0402
R344	1430762	Chip resistor	2.2 k	5 % 0.063 W 0402
R345	1430762	Chip resistor	2.2 k	5 % 0.063 W 0402
R346	1430762	Chip resistor	2.2 k	5 % 0.063 W 0402
R360	1430726	Chip resistor	100	5 % 0.063 W 0402
R361	1430754	Chip resistor	1.0 k	5 % 0.063 W 0402
R362	1430754	Chip resistor	1.0 k	5 % 0.063 W 0402
R363	1430754	Chip resistor	1.0 k	5 % 0.063 W 0402
R364	1430754	Chip resistor	1.0 k	5 % 0.063 W 0402
R365	1430754	Chip resistor	1.0 k	5 % 0.063 W 0402

Technical Documentation

Parts Lists

R366	1430754	Chip resistor	1.0 k	5 % 0.063 W 0402
R367	1430754	Chip resistor	1.0 k	5 % 0.063 W 0402
R370	1430796	Chip resistor	47 k	5 % 0.063 W 0402
R372	1430798	Chip resistor	56 k	5 % 0.063 W 0402
R373	1430804	Chip resistor	100 k	5 % 0.063 W 0402
R374	1430826	Chip resistor	680 k	5 % 0.063 W 0402
R375	1430804	Chip resistor	100 k	5 % 0.063 W 0402
R380	1430804	Chip resistor	100 k	5 % 0.063 W 0402
R381	1430804	Chip resistor	100 k	5 % 0.063 W 0402
R382	1430778	Chip resistor	10 k	5 % 0.063 W 0402
R383	1430792	Chip resistor	33 k	5 % 0.063 W 0402
R384	1430754	Chip resistor	1.0 k	5 % 0.063 W 0402
R385	1430754	Chip resistor	1.0 k	5 % 0.063 W 0402
R386	1430726	Chip resistor	100	5 % 0.063 W 0402
R387	1430784	Chip resistor	15 k	5 % 0.063 W 0402
R388	1430778	Chip resistor	10 k	5 % 0.063 W 0402
R389	1430754	Chip resistor	1.0 k	5 % 0.063 W 0402
R390	1430754	Chip resistor	1.0 k	5 % 0.063 W 0402
R391	1430760	Chip resistor	1.8 k	5 % 0.063 W 0402
R400	1430796	Chip resistor	47 k	5 % 0.063 W 0402
R401	1430778	Chip resistor	10 k	5 % 0.063 W 0402
R402	1430778	Chip resistor	10 k	5 % 0.063 W 0402
R403	1430778	Chip resistor	10 k	5 % 0.063 W 0402
R404	1430778	Chip resistor	10 k	5 % 0.063 W 0402
R405	1430700	Chip resistor	10	5 % 0.063 W 0402
R406	1430700	Chip resistor	10	5 % 0.063 W 0402
R407	1430804	Chip resistor	100 k	5 % 0.063 W 0402
R408	1430726	Chip resistor	100	5 % 0.063 W 0402
R420	1430752	Chip resistor	820	5 % 0.063 W 0402
R421	1430726	Chip resistor	100	5 % 0.063 W 0402
R462	1430754	Chip resistor	1.0 k	5 % 0.063 W 0402
R501	1430754	Chip resistor	1.0 k	5 % 0.063 W 0402
R502	1430732	Chip resistor	180	5 % 0.063 W 0402
R503	1430732	Chip resistor	180	5 % 0.063 W 0402
R504	1430778	Chip resistor	10 k	5 % 0.063 W 0402
R505	1430772	Chip resistor	5.6 k	5 % 0.063 W 0402
R506	1430710	Chip resistor	22	5 % 0.063 W 0402
R507	1430804	Chip resistor	100 k	5 % 0.063 W 0402
R508	1430804	Chip resistor	100 k	5 % 0.063 W 0402
R509	1430778	Chip resistor	10 k	5 % 0.063 W 0402
R511	1430770	Chip resistor	4.7 k	5 % 0.063 W 0402
R512	1430832	Chip resistor	2.7 k	5 % 0.063 W 0402

Parts Lists

Technical Documentation

R513	1430740	Chip resistor	330	5 % 0.063 W 0402
R514	1430710	Chip resistor	22	5 % 0.063 W 0402
R541	1430710	Chip resistor	22	5 % 0.063 W 0402
R542	1430734	Chip resistor	220	5 % 0.063 W 0402
R543	1430754	Chip resistor	1.0 k	5 % 0.063 W 0402
R544	1430762	Chip resistor	2.2 k	5 % 0.063 W 0402
R545	1430758	Chip resistor	1.5 k	5 % 0.063 W 0402
R546	1430724	Chip resistor	82	5 % 0.063 W 0402
R547	1430744	Chip resistor	470	5 % 0.063 W 0402
R551	1430770	Chip resistor	4.7 k	5 % 0.063 W 0402
R552	1430788	Chip resistor	22 k	5 % 0.063 W 0402
R553	1430770	Chip resistor	4.7 k	5 % 0.063 W 0402
R554	1430770	Chip resistor	4.7 k	5 % 0.063 W 0402
R555	1430788	Chip resistor	22 k	5 % 0.063 W 0402
R556	1430770	Chip resistor	4.7 k	5 % 0.063 W 0402
R557	1430730	Chip resistor	150	5 % 0.063 W 0402
R558	1430732	Chip resistor	180	5 % 0.063 W 0402
R559	1430740	Chip resistor	330	5 % 0.063 W 0402
R560	1430764	Chip resistor	3.3 k	5 % 0.063 W 0402
R562	1430754	Chip resistor	1.0 k	5 % 0.063 W 0402
R563	1430728	Chip resistor	120	5 % 0.063 W 0402
R564	1430738	Chip resistor	270	5 % 0.063 W 0402
R565	1430754	Chip resistor	1.0 k	5 % 0.063 W 0402
R566	1430754	Chip resistor	1.0 k	5 % 0.063 W 0402
R567	1430728	Chip resistor	120	5 % 0.063 W 0402
R568	1430734	Chip resistor	220	5 % 0.063 W 0402
R569	1430754	Chip resistor	1.0 k	5 % 0.063 W 0402
R570	1430726	Chip resistor	100	5 % 0.063 W 0402
R571	1430762	Chip resistor	2.2 k	5 % 0.063 W 0402
R572	1430276	Chip resistor	47 k	2 % 0.063 W 0603
R573	1430778	Chip resistor	10 k	5 % 0.063 W 0402
R574	1430778	Chip resistor	10 k	5 % 0.063 W 0402
R576	1430770	Chip resistor	4.7 k	5 % 0.063 W 0402
R577	1430792	Chip resistor	33 k	5 % 0.063 W 0402
R578	1430794	Chip resistor	39 k	5 % 0.063 W 0402
R579	1430778	Chip resistor	10 k	5 % 0.063 W 0402
R580	1430790	Chip resistor	27 k	5 % 0.063 W 0402
R583	1430790	Chip resistor	27 k	5 % 0.063 W 0402
R584	1430310	Chip resistor	75 k	2 % 0.063 W 0603
R601	1430762	Chip resistor	2.2 k	5 % 0.063 W 0402
R602	1430762	Chip resistor	2.2 k	5 % 0.063 W 0402
R603	1430762	Chip resistor	2.2 k	5 % 0.063 W 0402

Technical Documentation

Parts Lists

R701	1430832	Chip resistor	2.7 k	5 % 0.063 W 0402
R702	1430770	Chip resistor	4.7 k	5 % 0.063 W 0402
R703	1430710	Chip resistor	22	5 % 0.063 W 0402
R704	1430740	Chip resistor	330	5 % 0.063 W 0402
R705	1430724	Chip resistor	82	5 % 0.063 W 0402
R708	1430690	Chip jumper		0402
R711	1430758	Chip resistor	1.5 k	5 % 0.063 W 0402
R712	1430832	Chip resistor	2.7 k	5 % 0.063 W 0402
R713	1430744	Chip resistor	470	5 % 0.063 W 0402
R714	1430700	Chip resistor	10	5 % 0.063 W 0402
R715	1430693	Chip resistor	5.6	5 % 0.063 W 0402
R716	1430693	Chip resistor	5.6	5 % 0.063 W 0402
R717	1430734	Chip resistor	220	5 % 0.063 W 0402
R725	1430792	Chip resistor	33 k	5 % 0.063 W 0402
R726	1430790	Chip resistor	27 k	5 % 0.063 W 0402
R727	1430770	Chip resistor	4.7 k	5 % 0.063 W 0402
R728	1430730	Chip resistor	150	5 % 0.063 W 0402
R736	1430776	Chip resistor	8.2 k	5 % 0.063 W 0402
R737	1430812	Chip resistor	220 k	5 % 0.063 W 0402
R738	1430780	Chip resistor	12 k	5 % 0.063 W 0402
R739	1430762	Chip resistor	2.2 k	5 % 0.063 W 0402
R740	1430115	Chip resistor	2.2 k	1 % 0.063 W 0402
R741	1430746	Chip resistor	560	5 % 0.063 W 0402
R742	1430754	Chip resistor	1.0 k	5 % 0.063 W 0402
R743	1430700	Chip resistor	10	5 % 0.063 W 0402
R755	1430754	Chip resistor	1.0 k	5 % 0.063 W 0402
R756	1412279	Chip resistor	2.2	5 % 0.1 W 0805
R765	1430754	Chip resistor	1.0 k	5 % 0.063 W 0402
R766	1430748	Chip resistor	680	5 % 0.063 W 0402
R767	1430732	Chip resistor	180	5 % 0.063 W 0402
R768	1430752	Chip resistor	820	5 % 0.063 W 0402
R769	1430693	Chip resistor	5.6	5 % 0.063 W 0402
R774	1430712	Chip resistor	27	5 % 0.063 W 0402
R775	1430712	Chip resistor	27	5 % 0.063 W 0402
R776	1430714	Chip resistor	33	5 % 0.063 W 0402
R780	1430762	Chip resistor	2.2 k	5 % 0.063 W 0402
R781	1430740	Chip resistor	330	5 % 0.063 W 0402
R782	1430726	Chip resistor	100	5 % 0.063 W 0402
R783	1430690	Chip jumper		0402
R784	1430726	Chip resistor	100	5 % 0.063 W 0402
R785	1430762	Chip resistor	2.2 k	5 % 0.063 W 0402
R800	1430778	Chip resistor	10 k	5 % 0.063 W 0402

Parts Lists

Technical Documentation

R801	1430796	Chip resistor	47 k	5 % 0.063 W 0402
R802	1430796	Chip resistor	47 k	5 % 0.063 W 0402
R803	1430754	Chip resistor	1.0 k	5 % 0.063 W 0402
R804	1430788	Chip resistor	22 k	5 % 0.063 W 0402
R805	1430786	Chip resistor	18 k	5 % 0.063 W 0402
R806	1430774	Chip resistor	6.8 k	5 % 0.063 W 0402
R807	1430762	Chip resistor	2.2 k	5 % 0.063 W 0402
R808	1430734	Chip resistor	220	5 % 0.063 W 0402
R809	1820024	NTC resistor	47 k	5 % 0.2 W 0805
R811	1430774	Chip resistor	6.8 k	5 % 0.063 W 0402
R820	1430762	Chip resistor	2.2 k	5 % 0.063 W 0402
R821	1430762	Chip resistor	2.2 k	5 % 0.063 W 0402
R822	1430798	Chip resistor	56 k	5 % 0.063 W 0402
R823	1430770	Chip resistor	4.7 k	5 % 0.063 W 0402
R824	1430770	Chip resistor	4.7 k	5 % 0.063 W 0402
R825	1430770	Chip resistor	4.7 k	5 % 0.063 W 0402
R826	1430780	Chip resistor	12 k	5 % 0.063 W 0402
R827	1430774	Chip resistor	6.8 k	5 % 0.063 W 0402
R828	1430786	Chip resistor	18 k	5 % 0.063 W 0402
R829	1430718	Chip resistor	47	5 % 0.063 W 0402
R830	1430718	Chip resistor	47	5 % 0.063 W 0402
R840	1430770	Chip resistor	4.7 k	5 % 0.063 W 0402
R841	1430770	Chip resistor	4.7 k	5 % 0.063 W 0402
R842	1430844	Chip resistor	3.9 k	1 % 0.063 W 0402
R843	1430832	Chip resistor	2.7 k	5 % 0.063 W 0402
R844	1430734	Chip resistor	220	5 % 0.063 W 0402
R845	1430700	Chip resistor	10	5 % 0.063 W 0402
R846	1430726	Chip resistor	100	5 % 0.063 W 0402
R847	1430718	Chip resistor	47	5 % 0.063 W 0402
R860	1430716	Chip resistor	39	5 % 0.063 W 0402
C200	2310336	Ceramic cap.	18 p	5 % 50 V 0805
C201	2320544	Ceramic cap.	22 p	5 % 50 V 0402
C202	2320744	Ceramic cap.	1.0 n	10 % 50 V 0402
C203	2320744	Ceramic cap.	1.0 n	10 % 50 V 0402
C204	2320778	Ceramic cap.	10 n	10 % 16 V 0402
C205	2320778	Ceramic cap.	10 n	10 % 16 V 0402
C206	2320560	Ceramic cap.	100 p	5 % 50 V 0402
C207	2320560	Ceramic cap.	100 p	5 % 50 V 0402
C210	2320131	Ceramic cap.	33 n	10 % 16 V 0603
C211	2320131	Ceramic cap.	33 n	10 % 16 V 0603
C212	2320131	Ceramic cap.	33 n	10 % 16 V 0603
C213	2320131	Ceramic cap.	33 n	10 % 16 V 0603

Technical Documentation

Parts Lists

C214	2320131	Ceramic cap.	33 n	10 % 16 V 0603
C215	2320131	Ceramic cap.	33 n	10 % 16 V 0603
C216	2320131	Ceramic cap.	33 n	10 % 16 V 0603
C217	2320131	Ceramic cap.	33 n	10 % 16 V 0603
C218	2320131	Ceramic cap.	33 n	10 % 16 V 0603
C219	2320131	Ceramic cap.	33 n	10 % 16 V 0603
C220	2320744	Ceramic cap.	1.0 n	10 % 50 V 0402
C221	2320544	Ceramic cap.	22 p	5 % 50 V 0402
C225	2320107	Ceramic cap.	10 n	5 % 50 V 0603
C230	2320560	Ceramic cap.	100 p	5 % 50 V 0402
C231	2320620	Ceramic cap.	10 n	5 % 16 V 0402
C232	2604209	Tantalum cap.	1.0 u	20 % 16 V 3.2x1.6x1.6
C233	2604209	Tantalum cap.	1.0 u	20 % 16 V 3.2x1.6x1.6
C234	2320744	Ceramic cap.	1.0 n	10 % 50 V 0402
C235	2310791	Ceramic cap.	33 n	20 % 50 V 0805
C236	2320620	Ceramic cap.	10 n	5 % 16 V 0402
C237	2604329	Tantalum cap.	4.7 u	20 % 10 V 3.5x2.8x1.9
C238	2604329	Tantalum cap.	4.7 u	20 % 10 V 3.5x2.8x1.9
C239	2604329	Tantalum cap.	4.7 u	20 % 10 V 3.5x2.8x1.9
C240	2320778	Ceramic cap.	10 n	10 % 16 V 0402
C241	2604329	Tantalum cap.	4.7 u	20 % 10 V 3.5x2.8x1.9
C242	2320560	Ceramic cap.	100 p	5 % 50 V 0402
C243	2604329	Tantalum cap.	4.7 u	20 % 10 V 3.5x2.8x1.9
C244	2604329	Tantalum cap.	4.7 u	20 % 10 V 3.5x2.8x1.9
C245	2320560	Ceramic cap.	100 p	5 % 50 V 0402
C246	2320620	Ceramic cap.	10 n	5 % 16 V 0402
C247	2320560	Ceramic cap.	100 p	5 % 50 V 0402
C248	2320560	Ceramic cap.	100 p	5 % 50 V 0402
C249	2320107	Ceramic cap.	10 n	5 % 50 V 0603
C250	2320107	Ceramic cap.	10 n	5 % 50 V 0603
C251	2604209	Tantalum cap.	1.0 u	20 % 16 V 3.2x1.6x1.6
C252	2320598	Ceramic cap.	3.9 n	5 % 50 V 0402
C253	2320620	Ceramic cap.	10 n	5 % 16 V 0402
C300	2320598	Ceramic cap.	3.9 n	5 % 50 V 0402
C301	2320598	Ceramic cap.	3.9 n	5 % 50 V 0402
C302	2320598	Ceramic cap.	3.9 n	5 % 50 V 0402
C303	2320598	Ceramic cap.	3.9 n	5 % 50 V 0402
C304	2320544	Ceramic cap.	22 p	5 % 50 V 0402
C305	2320544	Ceramic cap.	22 p	5 % 50 V 0402
C306	2320560	Ceramic cap.	100 p	5 % 50 V 0402
C307	2320598	Ceramic cap.	3.9 n	5 % 50 V 0402
C308	2320560	Ceramic cap.	100 p	5 % 50 V 0402

Parts Lists

Technical Documentation

C309	2320560	Ceramic cap.	100 p	5 % 50 V 0402
C320	2320560	Ceramic cap.	100 p	5 % 50 V 0402
C321	2320544	Ceramic cap.	22 p	5 % 50 V 0402
C322	2320544	Ceramic cap.	22 p	5 % 50 V 0402
C323	2320560	Ceramic cap.	100 p	5 % 50 V 0402
C324	2320560	Ceramic cap.	100 p	5 % 50 V 0402
C325	2320560	Ceramic cap.	100 p	5 % 50 V 0402
C326	2320560	Ceramic cap.	100 p	5 % 50 V 0402
C330	2320560	Ceramic cap.	100 p	5 % 50 V 0402
C331	2320536	Ceramic cap.	10 p	5 % 50 V 0402
C332	2320620	Ceramic cap.	10 n	5 % 16 V 0402
C333	2320536	Ceramic cap.	10 p	5 % 50 V 0402
C340	2320560	Ceramic cap.	100 p	5 % 50 V 0402
C341	2320560	Ceramic cap.	100 p	5 % 50 V 0402
C342	2320560	Ceramic cap.	100 p	5 % 50 V 0402
C343	2320560	Ceramic cap.	100 p	5 % 50 V 0402
C345	2320560	Ceramic cap.	100 p	5 % 50 V 0402
C346	2320552	Ceramic cap.	47 p	5 % 50 V 0402
C347	2320560	Ceramic cap.	100 p	5 % 50 V 0402
C348	2320560	Ceramic cap.	100 p	5 % 50 V 0402
C349	2320560	Ceramic cap.	100 p	5 % 50 V 0402
C350	2320560	Ceramic cap.	100 p	5 % 50 V 0402
C360	2320544	Ceramic cap.	22 p	5 % 50 V 0402
C361	2320560	Ceramic cap.	100 p	5 % 50 V 0402
C362	2320560	Ceramic cap.	100 p	5 % 50 V 0402
C363	2320560	Ceramic cap.	100 p	5 % 50 V 0402
C380	2320560	Ceramic cap.	100 p	5 % 50 V 0402
C381	2604209	Tantalum cap.	1.0 u	20 % 16 V 3.2x1.6x1.6
C382	2320604	Ceramic cap.	18 p	5 % 50 V 0402
C383	2320604	Ceramic cap.	18 p	5 % 50 V 0402
C384	2320131	Ceramic cap.	33 n	10 % 16 V 0603
C385	2320131	Ceramic cap.	33 n	10 % 16 V 0603
C386	2320131	Ceramic cap.	33 n	10 % 16 V 0603
C387	2320131	Ceramic cap.	33 n	10 % 16 V 0603
C388	2320131	Ceramic cap.	33 n	10 % 16 V 0603
C389	2320560	Ceramic cap.	100 p	5 % 50 V 0402
C390	2320560	Ceramic cap.	100 p	5 % 50 V 0402
C391	2320560	Ceramic cap.	100 p	5 % 50 V 0402
C392	2320560	Ceramic cap.	100 p	5 % 50 V 0402
C393	2320560	Ceramic cap.	100 p	5 % 50 V 0402
C394	2320131	Ceramic cap.	33 n	10 % 16 V 0603
C395	2320620	Ceramic cap.	10 n	5 % 16 V 0402

Technical Documentation

Parts Lists

C396	2610100	Tantalum cap.	1 u	20 % 10 V 2.0x1.3x1.2
C400	2312292	Ceramic cap.	470 n	20 % Y5 V 1210
C401	2320598	Ceramic cap.	3.9 n	5 % 50 V 0402
C402	2320584	Ceramic cap.	1.0 n	5 % 50 V 0402
C403	2320544	Ceramic cap.	22 p	5 % 50 V 0402
C404	2610128	Tantalum cap.	10 u	20 % 3.5x2.8x1.9
C405	2310784	Ceramic cap.	100 n	10 % 25 V 0805
C406	2604209	Tantalum cap.	1.0 u	20 % 16 V 3.2x1.6x1.6
C407	2310784	Ceramic cap.	100 n	10 % 25 V 0805
C408	2320544	Ceramic cap.	22 p	5 % 50 V 0402
C409	2320544	Ceramic cap.	22 p	5 % 50 V 0402
C410	2320544	Ceramic cap.	22 p	5 % 50 V 0402
C411	2320544	Ceramic cap.	22 p	5 % 50 V 0402
C412	2604199	Tantalum cap.	2.2 u	20 % 3.2x1.6x1.6
C413	2320620	Ceramic cap.	10 n	5 % 16 V 0402
C414	2320620	Ceramic cap.	10 n	5 % 16 V 0402
C415	2320744	Ceramic cap.	1.0 n	10 % 50 V 0402
C416	2320744	Ceramic cap.	1.0 n	10 % 50 V 0402
C417	2320544	Ceramic cap.	22 p	5 % 50 V 0402
C418	2320544	Ceramic cap.	22 p	5 % 50 V 0402
C420	2320544	Ceramic cap.	22 p	5 % 50 V 0402
C421	2610100	Tantalum cap.	1 u	20 % 10 V 2.0x1.3x1.2
C422	2610100	Tantalum cap.	1 u	20 % 10 V 2.0x1.3x1.2
C423	2610100	Tantalum cap.	1 u	20 % 10 V 2.0x1.3x1.2
C424	2610100	Tantalum cap.	1 u	20 % 10 V 2.0x1.3x1.2
C425	2320131	Ceramic cap.	33 n	10 % 16 V 0603
C426	2610100	Tantalum cap.	1 u	20 % 10 V 2.0x1.3x1.2
C430	2320131	Ceramic cap.	33 n	10 % 16 V 0603
C431	2320131	Ceramic cap.	33 n	10 % 16 V 0603
C432	2320131	Ceramic cap.	33 n	10 % 16 V 0603
C433	2310791	Ceramic cap.	33 n	20 % 50 V 0805
C434	2310791	Ceramic cap.	33 n	20 % 50 V 0805
C435	2310791	Ceramic cap.	33 n	20 % 50 V 0805
C436	2320131	Ceramic cap.	33 n	10 % 16 V 0603
C437	2320131	Ceramic cap.	33 n	10 % 16 V 0603
C501	2320522	Ceramic cap.	2.7 p	0.25 % 50 V 0402
C502	2320560	Ceramic cap.	100 p	5 % 50 V 0402
C503	2320560	Ceramic cap.	100 p	5 % 50 V 0402
C504	2320544	Ceramic cap.	22 p	5 % 50 V 0402
C505	2320544	Ceramic cap.	22 p	5 % 50 V 0402
C506	2320526	Ceramic cap.	3.9 p	0.25 % 50 V 0402
C511	2320534	Ceramic cap.	8.2 p	0.25 % 50 V 0402

Parts Lists

Technical Documentation

C512	2320550	Ceramic cap.	39 p	5 % 50 V 0402
C513	2320518	Ceramic cap.	1.8 p	0.25 % 50 V 0402
C514	2320520	Ceramic cap.	2.2 p	0.25 % 50 V 0402
C515	2320756	Ceramic cap.	3.3 n	10 % 50 V 0402
C516	2320560	Ceramic cap.	100 p	5 % 50 V 0402
C517	2320550	Ceramic cap.	39 p	5 % 50 V 0402
C521	2320554	Ceramic cap.	56 p	5 % 50 V 0402
C536	2320560	Ceramic cap.	100 p	5 % 50 V 0402
C541	2320756	Ceramic cap.	3.3 n	10 % 50 V 0402
C542	2320744	Ceramic cap.	1.0 n	10 % 50 V 0402
C543	2320756	Ceramic cap.	3.3 n	10 % 50 V 0402
C544	2320744	Ceramic cap.	1.0 n	10 % 50 V 0402
C545	2320728	Ceramic cap.	220 p	10 % 50 V 0402
C546	2320728	Ceramic cap.	220 p	10 % 50 V 0402
C551	2320536	Ceramic cap.	10 p	5 % 50 V 0402
C552	2320560	Ceramic cap.	100 p	5 % 50 V 0402
C553	2320560	Ceramic cap.	100 p	5 % 50 V 0402
C554	2320564	Ceramic cap.	150 p	5 % 50 V 0402
C555	2320564	Ceramic cap.	150 p	5 % 50 V 0402
C556	2320752	Ceramic cap.	2.2 n	10 % 50 V 0402
C557	2320560	Ceramic cap.	100 p	5 % 50 V 0402
C558	2320560	Ceramic cap.	100 p	5 % 50 V 0402
C559	2320752	Ceramic cap.	2.2 n	10 % 50 V 0402
C560	2320752	Ceramic cap.	2.2 n	10 % 50 V 0402
C561	2320560	Ceramic cap.	100 p	5 % 50 V 0402
C562	2320075	Ceramic cap.	470 p	5 % 50 V 0603
C563	2320578	Ceramic cap.	560 p	5 % 50 V 0402
C564	2320560	Ceramic cap.	100 p	5 % 50 V 0402
C565	2310470	Ceramic cap.	270 p	5 % 50 V 0805
C566	2320558	Ceramic cap.	82 p	5 % 50 V 0402
C567	2310470	Ceramic cap.	270 p	5 % 50 V 0805
C569	2320756	Ceramic cap.	3.3 n	10 % 50 V 0402
C570	2320756	Ceramic cap.	3.3 n	10 % 50 V 0402
C571	2320756	Ceramic cap.	3.3 n	10 % 50 V 0402
C572	2310791	Ceramic cap.	33 n	20 % 50 V 0805
C573	2320560	Ceramic cap.	100 p	5 % 50 V 0402
C574	2320560	Ceramic cap.	100 p	5 % 50 V 0402
C575	2320530	Ceramic cap.	5.6 p	0.25 % 50 V 0402
C580	2320584	Ceramic cap.	1.0 n	5 % 50 V 0402
C601	2310784	Ceramic cap.	100 n	10 % 25 V 0805
C602	2312410	Ceramic cap.	1.0 u	10 % 16 V 1206
C603	2312410	Ceramic cap.	1.0 u	10 % 16 V 1206

Technical Documentation

Parts Lists

C604	2310784	Ceramic cap.	100 n	10 % 25 V 0805
C605	2312410	Ceramic cap.	1.0 u	10 % 16 V 1206
C606	2310752	Ceramic cap.	10 n	20 % 50 V 0805
C607	2310784	Ceramic cap.	100 n	10 % 25 V 0805
C608	2310784	Ceramic cap.	100 n	10 % 25 V 0805
C609	2310784	Ceramic cap.	100 n	10 % 25 V 0805
C701	2320548	Ceramic cap.	33 p	5 % 50 V 0402
C702	2320560	Ceramic cap.	100 p	5 % 50 V 0402
C703	2320756	Ceramic cap.	3.3 n	10 % 50 V 0402
C704	2320518	Ceramic cap.	1.8 p	0.25 % 50 V 0402
C705	2320520	Ceramic cap.	2.2 p	0.25 % 50 V 0402
C710	2320534	Ceramic cap.	8.2 p	0.25 % 50 V 0402
C711	2320558	Ceramic cap.	82 p	5 % 50 V 0402
C712	2320530	Ceramic cap.	5.6 p	0.25 % 50 V 0402
C713	2320516	Ceramic cap.	1.5 p	0.25 % 50 V 0402
C716	2320530	Ceramic cap.	5.6 p	0.25 % 50 V 0402
C720	2320552	Ceramic cap.	47 p	5 % 50 V 0402
C721	2320744	Ceramic cap.	1.0 n	10 % 50 V 0402
C722	2320524	Ceramic cap.	3.3 p	0.25 % 50 V 0402
C723	2320518	Ceramic cap.	1.8 p	0.25 % 50 V 0402
C725	2320552	Ceramic cap.	47 p	5 % 50 V 0402
C726	2320524	Ceramic cap.	3.3 p	0.25 % 50 V 0402
C728	2320524	Ceramic cap.	3.3 p	0.25 % 50 V 0402
C729	2320516	Ceramic cap.	1.5 p	0.25 % 50 V 0402
C730	2320552	Ceramic cap.	47 p	5 % 50 V 0402
C731	2320522	Ceramic cap.	2.7 p	0.25 % 50 V 0402
C732	2320534	Ceramic cap.	8.2 p	0.25 % 50 V 0402
C735	2320584	Ceramic cap.	1.0 n	5 % 50 V 0402
C736	2320584	Ceramic cap.	1.0 n	5 % 50 V 0402
C737	2320546	Ceramic cap.	27 p	5 % 50 V 0402
C738	2320536	Ceramic cap.	10 p	5 % 50 V 0402
C739	2320538	Ceramic cap.	12 p	5 % 50 V 0402
C740	2320584	Ceramic cap.	1.0 n	5 % 50 V 0402
C741	2320556	Ceramic cap.	68 p	5 % 50 V 0402
C742	2320536	Ceramic cap.	10 p	5 % 50 V 0402
C743	2320546	Ceramic cap.	27 p	5 % 50 V 0402
C744	2320538	Ceramic cap.	12 p	5 % 50 V 0402
C755	2320556	Ceramic cap.	68 p	5 % 50 V 0402
C756	2320578	Ceramic cap.	560 p	5 % 50 V 0402
C757	2320580	Ceramic cap.	680 p	5 % 50 V 0402
C758	2320556	Ceramic cap.	68 p	5 % 50 V 0402
C759	2320744	Ceramic cap.	1.0 n	10 % 50 V 0402

Parts Lists

Technical Documentation

C760	2320546	Ceramic cap.	27 p	5 % 50 V 0402
C761	2320522	Ceramic cap.	2.7 p	0.25 % 50 V 0402
C762	2320602	Ceramic cap.	4.7 p	0.25 % 50 V 0402
C763	2610011	Tantalum cap.	330 u	10 % 10 V 6.9x6x3.5
C764	2320361	Ceramic cap.	18 p	2 % 25 V 0603
C768	2320584	Ceramic cap.	1.0 n	5 % 50 V 0402
C770	2320534	Ceramic cap.	8.2 p	0.25 % 50 V 0402
C780	2320536	Ceramic cap.	10 p	5 % 50 V 0402
C781	2320536	Ceramic cap.	10 p	5 % 50 V 0402
C782	2320546	Ceramic cap.	27 p	5 % 50 V 0402
C783	2320546	Ceramic cap.	27 p	5 % 50 V 0402
C784	2320756	Ceramic cap.	3.3 n	10 % 50 V 0402
C790	2610011	Tantalum cap.	330 u	10 % 10 V 6.9x6x3.5
C791	2610011	Tantalum cap.	330 u	10 % 10 V 6.9x6x3.5
C792	2610011	Tantalum cap.	330 u	10 % 10 V 6.9x6x3.5
C793	2610011	Tantalum cap.	330 u	10 % 10 V 6.9x6x3.5
C800	2604079	Tantalum cap.	0.22 u	20 % 35 V 3.2x1.6x1.6
C801	2310791	Ceramic cap.	33 n	20 % 50 V 0805
C803	2320564	Ceramic cap.	150 p	5 % 50 V 0402
C804	2320552	Ceramic cap.	47 p	5 % 50 V 0402
C805	2320728	Ceramic cap.	220 p	10 % 50 V 0402
C806	2610100	Tantalum cap.	1 u	20 % 10 V 2.0x1.3x1.2
C807	2320756	Ceramic cap.	3.3 n	10 % 50 V 0402
C808	2320756	Ceramic cap.	3.3 n	10 % 50 V 0402
C809	2320744	Ceramic cap.	1.0 n	10 % 50 V 0402
C810	2320728	Ceramic cap.	220 p	10 % 50 V 0402
C820	2320560	Ceramic cap.	100 p	5 % 50 V 0402
C821	2310167	Ceramic cap.	1.0 n	5 % 50 V 1206
C822	2320053	Ceramic cap.	56 p	5 % 50 V 0603
C823	2310248	Ceramic cap.	4.7 n	5 % 50 V 1206
C824	2320560	Ceramic cap.	100 p	5 % 50 V 0402
C828	2610100	Tantalum cap.	1 u	20 % 10 V 2.0x1.3x1.2
C829	2320756	Ceramic cap.	3.3 n	10 % 50 V 0402
C830	2320560	Ceramic cap.	100 p	5 % 50 V 0402
C831	2610100	Tantalum cap.	1 u	20 % 10 V 2.0x1.3x1.2
C832	2320756	Ceramic cap.	3.3 n	10 % 50 V 0402
C840	2320548	Ceramic cap.	33 p	5 % 50 V 0402
C841	2610100	Tantalum cap.	1 u	20 % 10 V 2.0x1.3x1.2
C842	2320560	Ceramic cap.	100 p	5 % 50 V 0402
C843	2320546	Ceramic cap.	27 p	5 % 50 V 0402
C844	2320538	Ceramic cap.	12 p	5 % 50 V 0402
C845	2320604	Ceramic cap.	18 p	5 % 50 V 0402

C846	2320534	Ceramic cap.	8.2 p	0.25 % 50 V 0402
C847	2320602	Ceramic cap.	4.7 p	0.25 % 50 V 0402
C848	2320560	Ceramic cap.	100 p	5 % 50 V 0402
C849	2320744	Ceramic cap.	1.0 n	10 % 50 V 0402
C850	2320604	Ceramic cap.	18 p	5 % 50 V 0402
C851	2320550	Ceramic cap.	39 p	5 % 50 V 0402
C862	2320602	Ceramic cap.	4.7 p	0.25 % 50 V 0402
C863	2320522	Ceramic cap.	2.7 p	0.25 % 50 V 0402
L200	3641262	Ferrite bead 30r/100mhz 2a	1206	
L201	3606946	Ferrite bead 0.2r 26r/100mhz	1206	
L202	3641262	Ferrite bead 30r/100mhz 2a	1206	
L203	3641548	Chip coil	100 n	10 % Q=40/150 MHz
L230	3606946	Ferrite bead 0.2r 26r/100mhz	1206	
L231	3606946	Ferrite bead 0.2r 26r/100mhz	1206	
L232	3606946	Ferrite bead 0.2r 26r/100mhz	1206	
L300	3641302	Chip coil	470 n	5 % Q=30/25 MHz 1008
L511	3641550	Chip coil	120 n	10 % Q=35/150 MHz
L532	3641550	Chip coil	120 n	10 % Q=35/150 MHz
L541	3641550	Chip coil	120 n	10 % Q=35/150 MHz
L542	3608326	Chip coil	330 n	5 % Q=33/50 MHz 1206
L543	3641560	Chip coil	220 n	10 % Q=30/100 MHz
L544	3641560	Chip coil	220 n	10 % Q=30/100 MHz
L545	3608326	Chip coil	330 n	5 % Q=33/50 MHz 1206
L546	3608326	Chip coil	330 n	5 % Q=33/50 MHz 1206
L551	3641538	Chip coil	39 n	20 % Q=40/250 MHz
L700	3606946	Ferrite bead 0.2r 26r/100mhz	1206	
L705	3640013	Chip coil	8 n	5 % Q=50/250 MHz
L710	3641622	Chip coil	220 n	5 % Q=30/100 MHz
L711	3641542	Chip coil	56 n	10 % Q=40/200 MHz
L800	3641206	Chip coil		10 % Q=25/7.96 MHz
L801	3641206	Chip coil		10 % Q=25/7.96 MHz
L840	3641574	Chip coil	68 n	5 % Q=40/200 MHz
L841	3641538	Chip coil	39 n	20 % Q=40/250 MHz
B800	4510071	Crystal	26.000 M	
G001	4352933	Vco	1006-1031mhz	4.5v 15ma
G300	4510044	Crystal	60.2 M	
Z500	4512046	Dupl	890-915/935-960mhz	
Z505	4511016	Saw filter	947.5+	-12.5 M
Z541	4511026	Saw filter	71+	-0.08 M
Z551	4510009	Cer.filt	13+	-0.09mhz 330r
Z713	4550101	Cer.filt	902.5+	-12.5mhz
T300	3640402	Transformer	4:1 balun	800mhz smd

Parts Lists

Technical Documentation

V200	4111824	Diode	BAS16	75V 250 mA 6 ns SOT23
V201	4111824	Diode	BAS16	75V 250 mA 6 ns SOT23
V202	4100285	Diode x 2	BAV99	70V200mASER.SOT23
V230	4210020	Transistor	BCP69-25pnp	20 V 1 A SOT223
V231	4200877	Transistor	BCX51-16pnp	45 V 1.5 A SOT89
V232	4210020	Transistor	BCP69-25pnp	20 V 1 A SOT223
V250	4210020	Transistor	BCP69-25pnp	20 V 1 A SOT223
V251	4110074	Schottky diode	STPS340U40	V 3 A SOD6
V253	4200226	Darl. transistor	BCV27nnp	30 V 300 mA SOT23
V254	4200226	Darl. transistor	BCV27 npn	30 V 300 mA SOT23
V255	4200909	Transistor	BC858B/BCW30	pnp 30V 100mA SOT23
V256	4110126	Zener diode	BZX84	5 % 4.3V 0.3 W SOT23
V257	4202671	MosFet	BST82	n-ch 80V 175mA SOT23
V300	4210079	Transistor	BFS17	nnp 15V 50mA SOT23
V301	4210079	Transistor	BFS17	nnp 15V 50mA SOT23
V302	4210050	Transistor	DTA114EE	pnp RB V EM3
V303	4210100	Transistor	BC848W	nnp 30 V SOT323
V320	4110014	Sch. diode x 2	BAS70-07	70V 15mA SOT143
V330	4210100	Transistor	BC848W	nnp 30 V SOT323
V331	4200909	Transistor	BC858B/BCW30	pnp 30V 100mA SOT23
V370	4210102	Transistor	BC858W	pnp 30V100mA 200MWSOT323
V380	4200829	Transistor	BC859C	pnp 30 V 0.1 A SOT23
V381	4200811	Transistor	BC849C	nnp 30 V 0.1 A SOT23
V400	4200917	Transistor	BC848B/BCW32	nnp 30V 100 mA SOT23
V420	4117998	Precision voltage reference	4.096	4.096
V460	4110014	Sch. diode x 2	BAS70-07	70V 15mA SOT143
V501	4210046	Transistor	BFP182	nnp 20V 35mA SOT143
V502	4210102	Transistor	BC858W	pnp 30V 100mA 200MWSOT323
V503	4210100	Transistor	BC848W	nnp 30 V SOT323
V511	4115802	Sch. diode x 2	4V	30 mA SOT23
V512	4210066	Transistor	BFR93AW	nnp12 V35mA SOT323
V541	4210066	Transistor	BFR93AWnnp	12V 35mA SOT323
V701	4210066	Transistor	BFR93AWnnp	12V 35mA SOT323
V702	4100567	Sch. diode x 2	BAS70-04	70V 15mA SERSOT23
V710	4200755	Transistor	BFR92A	nnp 15 V 25 mA SOT23
V725	4200755	Transistor	BFR92A	nnp 15 V 25 mA SOT23

Technical Documentation

Parts Lists

V726	4210102	Transistor	BC858W pnp 30V 100mA 200MWSOT323
V735	4210100	Transistor	BC848W npn 30V SOT323
V736	4217070	Transistor x 2	IMD
V737	4210102	Transistor	BC858W pnp 30V 100mA 200MWSOT323
V738	4210090	Transistor	BFG540/X npn 15V 129mA SOT143
V755	4210102	Transistor	BC858W pnp 30V 100mA 200MWSOT323
V756	4210133	Transistor	BFG10W/X npn 10V 0.25A SOT343
V765	4210100	Transistor	BC848W npn 30 V SOT323
V766	4210100	Transistor	BC848W npn 30 V SOT323
V767	4100285	Diode x 2	BAV99 70V 200mA SER.SOT23
V768	4210135	Transistor	BLT82 npn 10 V SO8S
V780	4110014	Sch. diode x 2	BAS70-07 70V 15mA SOT143
V800	4110081	Cap. diode	BB640 28/1 V SOD323
V801	4210066	Transistor	BFR93AW npn12V 35mA SOT323
V802	4210066	Transistor	BFR93AW npn12V 35mA SOT323
V840	4210066	Transistor	BFR93AW npn12V 35mA SOT323
V841	4210066	Transistor	BFR93AW npn12V 35mA SOT323
V842	4110018	Cap. diode	BB135 30 V SOD323
D300	4340126	IC, 1xnand 2input cmos	ss TC7S00FSSO5
D301	4340126	IC, 1xnand 2input cmos	ssTC7S00FSSO5
N230	4375588	IC, PSL+ power supply	SO24W
N400	4340303	IC, af amp 0.5w 2.7-5.5v	soLM4861 SO8S
N551	4370091	Crfrt_st tx.mod+rxif+pwc	sqfp44 SQFP44
N601	4370095	Crfcontf 8xreg4.5v vref2v5	vsop28 VSOP28
N820	4340005	IC, 2xsynth 1.2ghz 3v	sso UMA1018MSSO20
X201	5469203	SM, conn 2x22 f p0.8 pcb/pcb	9.0 9.0MM
X202	5409041	SM, conn battery 4pol	p2.54
X212	5469037	SM, flex conn 12pol p0.5 u.conta	U.CONTACT
X400	5469031	SM, conn chp2502-0101 1x2 m	p1.2
X501	5429003	SM, coax conn recep 50r 3ghz	5x4
X503	5420460	Coax-conn female 50ohm	switch ims
MCM1	0200725	Submodule	
MCM2	0200726	Submodule	
	9854110	PCB GE8 121X55X1.0 M6	2/PA

PCN System Module – GE9_05

EDMS pn 0200727 Issue 4.0

Item	Code	Description / Value / Type
R200	1430796	CHIPRES 0W06 47K J 0402
R201	1430804	CHIPRES 0W06 100K J 0402
R202	1430788	CHIPRES 0W06 22K J 0402
R206	1430726	CHIPRES 0W06 100R J 0402
R207	1430726	CHIPRES 0W06 100R J 0402
R208	1430726	CHIPRES 0W06 100R J 0402
R209	1430726	CHIPRES 0W06 100R J 0402
R210	1430796	CHIPRES 0W06 47K J 0402
R211	1430700	CHIPRES 0W06 10R J 0402
R212	1430804	CHIPRES 0W06 100K J 0402
R213	1430726	CHIPRES 0W06 100R J 0402
R216	1430778	CHIPRES 0W06 10K J 0402
R220	1430770	CHIPRES 0W06 4K7 J 0402
R222	1430726	CHIPRES 0W06 100R J 0402
R224	1430079	CHIPRES 0W06 47K J 0603
R230	1430842	CHIPRES 0W06 680K F 0402
R231	1430840	CHIPRES 0W06 220K F 0402
R232	1430804	CHIPRES 0W06 100K J 0402
R233	1430804	CHIPRES 0W06 100K J 0402
R250	1430792	CHIPRES 0W06 33K J 0402
R251	1430764	CHIPRES 0W06 3K3 J 0402
R252	1430846	CHIPRES 0W06 2K7 F 0402
R253	1430764	CHIPRES 0W06 3K3 J 0402
R254	1430734	CHIPRES 0W06 220R J 0402
R255	1430788	CHIPRES 0W06 22K J 0402
R256	1430844	CHIPRES 0W06 3K9 F 0402
R257	1430778	CHIPRES 0W06 10K J 0402
R258	1430732	CHIPRES 0W06 180R J 0402
R259	1430804	CHIPRES 0W06 100K J 0402
R260	1430762	CHIPRES 0W06 2K2 J 0402
R261	1430762	CHIPRES 0W06 2K2 J 0402
R262	1430732	CHIPRES 0W06 180R J 0402
R263	1430778	CHIPRES 0W06 10K J 0402
R264	1430778	CHIPRES 0W06 10K J 0402
R265	1430045	CHIPRES 0W06 2K7 J 0603
R266	1430045	CHIPRES 0W06 2K7 J 0603
R267	1430087	CHIPRES 0W06 100K J 0603
R268	1430087	CHIPRES 0W06 100K J 0603

Technical Documentation

Parts Lists

R270	1430776	CHIPRES 0W06 8K2 J	0402
R271	1430812	CHIPRES 0W06 220K J	0402
R300	1430762	CHIPRES 0W06 2K2 J	0402
R301	1430804	CHIPRES 0W06 100K J	0402
R302	1430804	CHIPRES 0W06 100K J	0402
R303	1430754	CHIPRES 0W06 1K0 J	0402
R304	1430730	CHIPRES 0W06 150R J	0402
R305	1430804	CHIPRES 0W06 100K J	0402
R306	1430788	CHIPRES 0W06 22K J	0402
R307	1430794	CHIPRES 0W06 39K J	0402
R308	1430804	CHIPRES 0W06 100K J	0402
R309	1430796	CHIPRES 0W06 47K J	0402
R310	1430764	CHIPRES 0W06 3K3 J	0402
R311	1430744	CHIPRES 0W06 470R J	0402
R312	1430796	CHIPRES 0W06 47K J	0402
R313	1430115	CHIPRES 0W06 2K2 F 200PPM	0402
R314	1430115	CHIPRES 0W06 2K2 F 200PPM	0402
R320	1430804	CHIPRES 0W06 100K J	0402
R330	1430722	CHIPRES 0W06 68R J	0402
R331	1430726	CHIPRES 0W06 100R J	0402
R332	1430804	CHIPRES 0W06 100K J	0402
R333	1430770	CHIPRES 0W06 4K7 J	0402
R334	1430760	CHIPRES 0W06 1K8 J	0402
R335	1430804	CHIPRES 0W06 100K J	0402
R336	1430792	CHIPRES 0W06 33K J	0402
R337	1430778	CHIPRES 0W06 10K J	0402
R338	1430726	CHIPRES 0W06 100R J	0402
R340	1430762	CHIPRES 0W06 2K2 J	0402
R341	1430762	CHIPRES 0W06 2K2 J	0402
R342	1430762	CHIPRES 0W06 2K2 J	0402
R343	1430762	CHIPRES 0W06 2K2 J	0402
R344	1430762	CHIPRES 0W06 2K2 J	0402
R345	1430762	CHIPRES 0W06 2K2 J	0402
R346	1430762	CHIPRES 0W06 2K2 J	0402
R360	1430726	CHIPRES 0W06 100R J	0402
R361	1430754	CHIPRES 0W06 1K0 J	0402
R362	1430754	CHIPRES 0W06 1K0 J	0402
R363	1430754	CHIPRES 0W06 1K0 J	0402
R364	1430754	CHIPRES 0W06 1K0 J	0402
R365	1430754	CHIPRES 0W06 1K0 J	0402
R366	1430754	CHIPRES 0W06 1K0 J	0402
R367	1430754	CHIPRES 0W06 1K0 J	0402

Parts Lists

Technical Documentation

R370	1430796	CHIPRES 0W06 47K J	0402
R372	1430798	CHIPRES 0W06 56K J	0402
R373	1430804	CHIPRES 0W06 100K J	0402
R374	1430826	CHIPRES 0W06 680K J	0402
R375	1430804	CHIPRES 0W06 100K J	0402
R380	1430804	CHIPRES 0W06 100K J	0402
R381	1430804	CHIPRES 0W06 100K J	0402
R382	1430778	CHIPRES 0W06 10K J	0402
R383	1430792	CHIPRES 0W06 33K J	0402
R384	1430754	CHIPRES 0W06 1K0 J	0402
R385	1430754	CHIPRES 0W06 1K0 J	0402
R386	1430726	CHIPRES 0W06 100R J	0402
R387	1430784	CHIPRES 0W06 15K J	0402
R388	1430778	CHIPRES 0W06 10K J	0402
R389	1430754	CHIPRES 0W06 1K0 J	0402
R390	1430754	CHIPRES 0W06 1K0 J	0402
R391	1430760	CHIPRES 0W06 1K8 J	0402
R400	1430796	CHIPRES 0W06 47K J	0402
R401	1430778	CHIPRES 0W06 10K J	0402
R402	1430778	CHIPRES 0W06 10K J	0402
R403	1430778	CHIPRES 0W06 10K J	0402
R404	1430778	CHIPRES 0W06 10K J	0402
R405	1430700	CHIPRES 0W06 10R J	0402
R406	1430700	CHIPRES 0W06 10R J	0402
R407	1430804	CHIPRES 0W06 100K J	0402
R408	1430726	CHIPRES 0W06 100R J	0402
R420	1430752	CHIPRES 0W06 820R J	0402
R421	1430726	CHIPRES 0W06 100R J	0402
R462	1430754	CHIPRES 0W06 1K0 J	0402
R500	1430690	CHIPRES JUMPER 0R0	0402
R501	1430770	CHIPRES 0W06 4K7 J	0402
R502	1430732	CHIPRES 0W06 180R J	0402
R503	1430728	CHIPRES 0W06 120R J	0402
R504	1430778	CHIPRES 0W06 10K J	0402
R505	1430772	CHIPRES 0W06 5K6 J	0402
R506	1430710	CHIPRES 0W06 22R J	0402
R507	1430804	CHIPRES 0W06 100K J	0402
R508	1430804	CHIPRES 0W06 100K J	0402
R509	1430774	CHIPRES 0W06 6K8 J	0402
R510	1430762	CHIPRES 0W06 2K2 J	0402
R511	1430770	CHIPRES 0W06 4K7 J	0402
R512	1430832	CHIPRES 0W06 2K7 J	0402

Technical Documentation

Parts Lists

R513	1430744	CHIPRES 0W06 470R J	0402
R514	1430710	CHIPRES 0W06 22R J	0402
R518	1430778	CHIPRES 0W06 10K J	0402
R521	1430754	CHIPRES 0W06 1K0 J	0402
R522	1430762	CHIPRES 0W06 2K2 J	0402
R523	1430756	CHIPRES 0W06 1K2 J	0402
R524	1430734	CHIPRES 0W06 220R J	0402
R525	1430734	CHIPRES 0W06 220R J	0402
R531	1430710	CHIPRES 0W06 22R J	0402
R532	1430740	CHIPRES 0W06 330R J	0402
R533	1430770	CHIPRES 0W06 4K7 J	0402
R534	1430832	CHIPRES 0W06 2K7 J	0402
R535	1430710	CHIPRES 0W06 22R J	0402
R541	1430710	CHIPRES 0W06 22R J	0402
R543	1430740	CHIPRES 0W06 330R J	0402
R544	1430762	CHIPRES 0W06 2K2 J	0402
R545	1430758	CHIPRES 0W06 1K5 J	0402
R546	1430724	CHIPRES 0W06 82R J	0402
R547	1430744	CHIPRES 0W06 470R J	0402
R548	1430734	CHIPRES 0W06 220R J	0402
R549	1430778	CHIPRES 0W06 10K J	0402
R550	1430778	CHIPRES 0W06 10K J	0402
R551	1430770	CHIPRES 0W06 4K7 J	0402
R552	1430788	CHIPRES 0W06 22K J	0402
R553	1430770	CHIPRES 0W06 4K7 J	0402
R554	1430770	CHIPRES 0W06 4K7 J	0402
R555	1430788	CHIPRES 0W06 22K J	0402
R556	1430770	CHIPRES 0W06 4K7 J	0402
R557	1430730	CHIPRES 0W06 150R J	0402
R558	1430732	CHIPRES 0W06 180R J	0402
R559	1430740	CHIPRES 0W06 330R J	0402
R560	1430764	CHIPRES 0W06 3K3 J	0402
R561	1430792	CHIPRES 0W06 33K J	0402
R562	1430754	CHIPRES 0W06 1K0 J	0402
R563	1430728	CHIPRES 0W06 120R J	0402
R564	1430738	CHIPRES 0W06 270R J	0402
R565	1430754	CHIPRES 0W06 1K0 J	0402
R566	1430754	CHIPRES 0W06 1K0 J	0402
R567	1430728	CHIPRES 0W06 120R J	0402
R568	1430734	CHIPRES 0W06 220R J	0402
R569	1430754	CHIPRES 0W06 1K0 J	0402
R570	1430726	CHIPRES 0W06 100R J	0402

Parts Lists

Technical Documentation

R571	1430762	CHIPRES 0W06 2K2 J	0402
R572	1430276	CHIPRES 0W06 47K G	0603
R573	1430778	CHIPRES 0W06 10K J	0402
R574	1430778	CHIPRES 0W06 10K J	0402
R576	1430770	CHIPRES 0W06 4K7 J	0402
R577	1430792	CHIPRES 0W06 33K J	0402
R578	1430794	CHIPRES 0W06 39K J	0402
R579	1430778	CHIPRES 0W06 10K J	0402
R580	1430790	CHIPRES 0W06 27K J	0402
R584	1430310	CHIPRES 0W06 75K G	0603
R601	1430762	CHIPRES 0W06 2K2 J	0402
R602	1430762	CHIPRES 0W06 2K2 J	0402
R603	1430762	CHIPRES 0W06 2K2 J	0402
R701	1430832	CHIPRES 0W06 2K7 J	0402
R702	1430770	CHIPRES 0W06 4K7 J	0402
R703	1430710	CHIPRES 0W06 22R J	0402
R704	1430740	CHIPRES 0W06 330R J	0402
R705	1430730	CHIPRES 0W06 150R J	0402
R706	1430693	CHIPRES 0W06 5R6 J	0402
R707	1430730	CHIPRES 0W06 150R J	0402
R710	1430690	CHIPRES JUMPER 0R0	0402
R711	1430758	CHIPRES 0W06 1K5 J	0402
R712	1430832	CHIPRES 0W06 2K7 J	0402
R713	1430744	CHIPRES 0W06 470R J	0402
R714	1430700	CHIPRES 0W06 10R J	0402
R715	1430730	CHIPRES 0W06 150R J	0402
R716	1430700	CHIPRES 0W06 10R J	0402
R725	1430784	CHIPRES 0W06 15K J	0402
R726	1430788	CHIPRES 0W06 22K J	0402
R727	1430762	CHIPRES 0W06 2K2 J	0402
R728	1430728	CHIPRES 0W06 120R J	0402
R729	1430730	CHIPRES 0W06 150R J	0402
R730	1430700	CHIPRES 0W06 10R J	0402
R731	1430728	CHIPRES 0W06 120R J	0402
R732	1430700	CHIPRES 0W06 10R J	0402
R735	1430762	CHIPRES 0W06 2K2 J	0402
R737	1430756	CHIPRES 0W06 1K2 J	0402
R738	1430778	CHIPRES 0W06 10K J	0402
R739	1430778	CHIPRES 0W06 10K J	0402
R740	1430774	CHIPRES 0W06 6K8 J	0402
R741	1430764	CHIPRES 0W06 3K3 J	0402
R742	1430774	CHIPRES 0W06 6K8 J	0402

Technical Documentation

Parts Lists

R743	1430762	CHIPRES 0W06 2K2 J	0402
R744	1430762	CHIPRES 0W06 2K2 J	0402
R745	1430762	CHIPRES 0W06 2K2 J	0402
R746	1430756	CHIPRES 0W06 1K2 J	0402
R747	1430712	CHIPRES 0W06 27R J	0402
R748	1430754	CHIPRES 0W06 1K0 J	0402
R749	1430732	CHIPRES 0W06 180R J	0402
R750	1430754	CHIPRES 0W06 1K0 J	0402
R751	1430778	CHIPRES 0W06 10K J	0402
R755	1430762	CHIPRES 0W06 2K2 J	0402
R756	1430754	CHIPRES 0W06 1K0 J	0402
R757	1430734	CHIPRES 0W06 220R J	0402
R758	1412279	CHIPRES 0W1 2R2 J	0805
R765	1430762	CHIPRES 0W06 2K2 J	0402
R766	1430754	CHIPRES 0W06 1K0 J	0402
R767	1430726	CHIPRES 0W06 100R J	0402
R768	1411123	MELFRES 0W25 0R22 J	0204
R774	1430712	CHIPRES 0W06 27R J	0402
R775	1430712	CHIPRES 0W06 27R J	0402
R776	1430714	CHIPRES 0W06 33R J	0402
R780	1430770	CHIPRES 0W06 4K7 J	0402
R781	1430740	CHIPRES 0W06 330R J	0402
R782	1430726	CHIPRES 0W06 100R J	0402
R783	1430722	CHIPRES 0W06 68R J	0402
R784	1430726	CHIPRES 0W06 100R J	0402
R785	1430762	CHIPRES 0W06 2K2 J	0402
R790	1430700	CHIPRES 0W06 10R J	0402
R791	1430718	CHIPRES 0W06 47R J	0402
R792	1430770	CHIPRES 0W06 4K7 J	0402
R800	1430778	CHIPRES 0W06 10K J	0402
R801	1430796	CHIPRES 0W06 47K J	0402
R802	1430796	CHIPRES 0W06 47K J	0402
R803	1430762	CHIPRES 0W06 2K2 J	0402
R804	1430788	CHIPRES 0W06 22K J	0402
R805	1430786	CHIPRES 0W06 18K J	0402
R806	1430774	CHIPRES 0W06 6K8 J	0402
R807	1430758	CHIPRES 0W06 1K5 J	0402
R808	1430734	CHIPRES 0W06 220R J	0402
R809	1820024	NTC RES 0W2 47K J B=4050+-3% 0805	
R820	1430778	CHIPRES 0W06 10K J	0402
R821	1430786	CHIPRES 0W06 18K J	0402
R822	1430778	CHIPRES 0W06 10K J	0402

Parts Lists

Technical Documentation

R823	1430770	CHIPRES 0W06 4K7 J	0402
R824	1430770	CHIPRES 0W06 4K7 J	0402
R825	1430770	CHIPRES 0W06 4K7 J	0402
R827	1430766	CHIPRES 0W06 3K9 J	0402
R828	1430786	CHIPRES 0W06 18K J	0402
R829	1430718	CHIPRES 0W06 47R J	0402
R830	1430718	CHIPRES 0W06 47R J	0402
R840	1430786	CHIPRES 0W06 18K J	0402
R841	1430770	CHIPRES 0W06 4K7 J	0402
R842	1430770	CHIPRES 0W06 4K7 J	0402
R843	1430832	CHIPRES 0W06 2K7 J	0402
R844	1430734	CHIPRES 0W06 220R J	0402
R845	1430700	CHIPRES 0W06 10R J	0402
R846	1430710	CHIPRES 0W06 22R J	0402
R847	1430718	CHIPRES 0W06 47R J	0402
R860	1430716	CHIPRES 0W06 39R J	0402
C200	2310336	CHIPCAP NP0 18P J 50V	0805
C201	2320544	CHIPCAP NP0 22P J 50V	0402
C202	2320744	CHIPCAP X7R 1N0 K 50V	0402
C203	2320744	CHIPCAP X7R 1N0 K 50V	0402
C204	2320778	CHIPCAP X7R 10N K 16V	0402
C205	2320778	CHIPCAP X7R 10N K 16V	0402
C206	2320560	CHIPCAP NP0 100P J 50V	0402
C207	2320560	CHIPCAP NP0 100P J 50V	0402
C210	2320131	CHIPCAP X7R 33N K 16V	0603
C211	2320131	CHIPCAP X7R 33N K 16V	0603
C212	2320131	CHIPCAP X7R 33N K 16V	0603
C213	2320131	CHIPCAP X7R 33N K 16V	0603
C214	2320131	CHIPCAP X7R 33N K 16V	0603
C215	2320131	CHIPCAP X7R 33N K 16V	0603
C216	2320131	CHIPCAP X7R 33N K 16V	0603
C217	2320131	CHIPCAP X7R 33N K 16V	0603
C218	2320131	CHIPCAP X7R 33N K 16V	0603
C219	2320131	CHIPCAP X7R 33N K 16V	0603
C220	2320744	CHIPCAP X7R 1N0 K 50V	0402
C221	2320544	CHIPCAP NP0 22P J 50V	0402
C225	2320107	CHIPCAP X7R 10N J 50V	0603
C230	2320560	CHIPCAP NP0 100P J 50V	0402
C231	2320620	CHIPCAP X7R 10N J 16V	0402
C232	2604209	CHIPTCAP 1U0 M 16V	3.2X1.6X1.6
C233	2604209	CHIPTCAP 1U0 M 16V	3.2X1.6X1.6
C234	2320744	CHIPCAP X7R 1N0 K 50V	0402

Technical Documentation

Parts Lists

C235	2310791	CHIPCAP X7R 33N M 50V	0805
C236	2320620	CHIPCAP X7R 10N J 16V	0402
C237	2604329	CHIPTCAP 4U7 M 10V	3.5X2.8X1.9
C238	2604329	CHIPTCAP 4U7 M 10V	3.5X2.8X1.9
C239	2604329	CHIPTCAP 4U7 M 10V	3.5X2.8X1.9
C240	2320778	CHIPCAP X7R 10N K 16V	0402
C241	2604329	CHIPTCAP 4U7 M 10V	3.5X2.8X1.9
C242	2320560	CHIPCAP NP0 100P J 50V	0402
C243	2604329	CHIPTCAP 4U7 M 10V	3.5X2.8X1.9
C244	2604329	CHIPTCAP 4U7 M 10V	3.5X2.8X1.9
C245	2320560	CHIPCAP NP0 100P J 50V	0402
C246	2320620	CHIPCAP X7R 10N J 16V	0402
C247	2320560	CHIPCAP NP0 100P J 50V	0402
C248	2320560	CHIPCAP NP0 100P J 50V	0402
C249	2320107	CHIPCAP X7R 10N J 50V	0603
C250	2320107	CHIPCAP X7R 10N J 50V	0603
C251	2604209	CHIPTCAP 1U0 M 16V	3.2X1.6X1.6
C252	2320598	CHIPCAP X7R 3N9 J 50V	0402
C253	2320620	CHIPCAP X7R 10N J 16V	0402
C296	2320560	CHIPCAP NP0 100P J 50V	0402
C300	2320598	CHIPCAP X7R 3N9 J 50V	0402
C301	2320598	CHIPCAP X7R 3N9 J 50V	0402
C302	2320598	CHIPCAP X7R 3N9 J 50V	0402
C303	2320598	CHIPCAP X7R 3N9 J 50V	0402
C304	2320544	CHIPCAP NP0 22P J 50V	0402
C305	2320544	CHIPCAP NP0 22P J 50V	0402
C306	2320560	CHIPCAP NP0 100P J 50V	0402
C307	2320598	CHIPCAP X7R 3N9 J 50V	0402
C308	2320560	CHIPCAP NP0 100P J 50V	0402
C309	2320560	CHIPCAP NP0 100P J 50V	0402
C320	2320560	CHIPCAP NP0 100P J 50V	0402
C321	2320544	CHIPCAP NP0 22P J 50V	0402
C322	2320544	CHIPCAP NP0 22P J 50V	0402
C323	2320560	CHIPCAP NP0 100P J 50V	0402
C324	2320560	CHIPCAP NP0 100P J 50V	0402
C325	2320560	CHIPCAP NP0 100P J 50V	0402
C326	2320560	CHIPCAP NP0 100P J 50V	0402
C330	2320560	CHIPCAP NP0 100P J 50V	0402
C331	2320536	CHIPCAP NP0 10P J 50V	0402
C332	2320620	CHIPCAP X7R 10N J 16V	0402
C333	2320536	CHIPCAP NP0 10P J 50V	0402
C340	2320560	CHIPCAP NP0 100P J 50V	0402

C341	2320560	CHIPCAP NP0 100P J 50V	0402
C342	2320560	CHIPCAP NP0 100P J 50V	0402
C343	2320560	CHIPCAP NP0 100P J 50V	0402
C345	2320560	CHIPCAP NP0 100P J 50V	0402
C346	2320552	CHIPCAP NP0 47P J 50V	0402
C347	2320560	CHIPCAP NP0 100P J 50V	0402
C348	2320560	CHIPCAP NP0 100P J 50V	0402
C349	2320560	CHIPCAP NP0 100P J 50V	0402
C350	2320560	CHIPCAP NP0 100P J 50V	0402
C360	2320544	CHIPCAP NP0 22P J 50V	0402
C361	2320560	CHIPCAP NP0 100P J 50V	0402
C362	2320560	CHIPCAP NP0 100P J 50V	0402
C363	2320560	CHIPCAP NP0 100P J 50V	0402
C380	2320560	CHIPCAP NP0 100P J 50V	0402
C381	2604209	CHIPTCAP 1U0 M 16V 3.2X1.6X1.6	
C382	2320604	CHIPCAP NP0 18P J 50V	0402
C383	2320604	CHIPCAP NP0 18P J 50V	0402
C384	2320131	CHIPCAP X7R 33N K 16V	0603
C385	2320131	CHIPCAP X7R 33N K 16V	0603
C386	2320131	CHIPCAP X7R 33N K 16V	0603
C387	2320131	CHIPCAP X7R 33N K 16V	0603
C388	2320131	CHIPCAP X7R 33N K 16V	0603
C389	2320560	CHIPCAP NP0 100P J 50V	0402
C390	2320560	CHIPCAP NP0 100P J 50V	0402
C391	2320560	CHIPCAP NP0 100P J 50V	0402
C392	2320560	CHIPCAP NP0 100P J 50V	0402
C393	2320560	CHIPCAP NP0 100P J 50V	0402
C394	2320131	CHIPCAP X7R 33N K 16V	0603
C395	2320620	CHIPCAP X7R 10N J 16V	0402
C396	2610100	CHIPTCAP 1U M 10V 2.0X1.3X1.2	
C400	2312292	CHIPCAP Y5V 470N M 50V	1210
C401	2320598	CHIPCAP X7R 3N9 J 50V	0402
C402	2320584	CHIPCAP X7R 1N0 J 50V	0402
C403	2320544	CHIPCAP NP0 22P J 50V	0402
C404	2610128	CHIPTCAP 10U M 6V3 3.5X2.8X1.9	
C405	2310784	CHIPCAP X7R 100N K 25V	0805
C406	2604209	CHIPTCAP 1U0 M 16V 3.2X1.6X1.6	
C407	2310784	CHIPCAP X7R 100N K 25V	0805
C408	2320544	CHIPCAP NP0 22P J 50V	0402
C409	2320544	CHIPCAP NP0 22P J 50V	0402
C410	2320544	CHIPCAP NP0 22P J 50V	0402
C411	2320544	CHIPCAP NP0 22P J 50V	0402

Technical Documentation

Parts Lists

C412	2604199	CHIPTCAP 2U2 M 6V3	3.2X1.6X1.6
C413	2320620	CHIPCAP X7R 10N J 16V	0402
C414	2320620	CHIPCAP X7R 10N J 16V	0402
C415	2320744	CHIPCAP X7R 1N0 K 50V	0402
C416	2320744	CHIPCAP X7R 1N0 K 50V	0402
C417	2320544	CHIPCAP NP0 22P J 50V	0402
C418	2320544	CHIPCAP NP0 22P J 50V	0402
C420	2320544	CHIPCAP NP0 22P J 50V	0402
C421	2610100	CHIPTCAP 1U M 10V	2.0X1.3X1.2
C422	2610100	CHIPTCAP 1U M 10V	2.0X1.3X1.2
C423	2610100	CHIPTCAP 1U M 10V	2.0X1.3X1.2
C424	2610100	CHIPTCAP 1U M 10V	2.0X1.3X1.2
C425	2320131	CHIPCAP X7R 33N K 16V	0603
C426	2610100	CHIPTCAP 1U M 10V	2.0X1.3X1.2
C430	2320131	CHIPCAP X7R 33N K 16V	0603
C431	2320131	CHIPCAP X7R 33N K 16V	0603
C432	2320131	CHIPCAP X7R 33N K 16V	0603
C433	2310791	CHIPCAP X7R 33N M 50V	0805
C434	2310791	CHIPCAP X7R 33N M 50V	0805
C435	2310791	CHIPCAP X7R 33N M 50V	0805
C436	2320131	CHIPCAP X7R 33N K 16V	0603
C437	2320131	CHIPCAP X7R 33N K 16V	0603
C501	2320518	CHIPCAP NP0 1P8 C 50V	0402
C502	2320532	CHIPCAP NP0 6P8 C 50V	0402
C503	2320560	CHIPCAP NP0 100P J 50V	0402
C504	2320536	CHIPCAP NP0 10P J 50V	0402
C505	2320544	CHIPCAP NP0 22P J 50V	0402
C506	2320516	CHIPCAP NP0 1P5 C 50V	0402
C508	2320756	CHIPCAP X7R 3N3 K 50V	0402
C509	2320544	CHIPCAP NP0 22P J 50V	0402
C510	2320544	CHIPCAP NP0 22P J 50V	0402
C511	2320604	CHIPCAP NP0 18P J 50V	0402
C512	2320518	CHIPCAP NP0 1P8 C 50V	0402
C513	2320516	CHIPCAP NP0 1P5 C 50V	0402
C514	2320516	CHIPCAP NP0 1P5 C 50V	0402
C515	2320756	CHIPCAP X7R 3N3 K 50V	0402
C516	2320560	CHIPCAP NP0 100P J 50V	0402
C517	2320548	CHIPCAP NP0 33P J 50V	0402
C521	2320524	CHIPCAP NP0 3P3 C 50V	0402
C522	2320744	CHIPCAP X7R 1N0 K 50V	0402
C523	2320550	CHIPCAP NP0 39P J 50V	0402
C524	2320544	CHIPCAP NP0 22P J 50V	0402

C525	2320544	CHIPCAP NP0 22P J 50V	0402
C526	2320604	CHIPCAP NP0 18P J 50V	0402
C527	2320544	CHIPCAP NP0 22P J 50V	0402
C528	2320526	CHIPCAP NP0 3P9 C 50V	0402
C529	2320532	CHIPCAP NP0 6P8 C 50V	0402
C530	2320604	CHIPCAP NP0 18P J 50V	0402
C531	2320520	CHIPCAP NP0 2P2 C 50V	0402
C532	2320540	CHIPCAP NP0 15P J 50V	0402
C533	2320744	CHIPCAP X7R 1N0 K 50V	0402
C534	2320756	CHIPCAP X7R 3N3 K 50V	0402
C535	2320532	CHIPCAP NP0 6P8 C 50V	0402
C536	2320554	CHIPCAP NP0 56P J 50V	0402
C537	2320604	CHIPCAP NP0 18P J 50V	0402
C538	2320534	CHIPCAP NP0 8P2 C 50V	0402
C541	2320756	CHIPCAP X7R 3N3 K 50V	0402
C542	2320744	CHIPCAP X7R 1N0 K 50V	0402
C543	2320756	CHIPCAP X7R 3N3 K 50V	0402
C544	2320744	CHIPCAP X7R 1N0 K 50V	0402
C545	2320560	CHIPCAP NP0 100P J 50V	0402
C546	2320560	CHIPCAP NP0 100P J 50V	0402
C547	2320544	CHIPCAP NP0 22P J 50V	0402
C551	2320534	CHIPCAP NP0 8P2 C 50V	0402
C552	2320560	CHIPCAP NP0 100P J 50V	0402
C553	2320560	CHIPCAP NP0 100P J 50V	0402
C554	2320564	CHIPCAP NP0 150P J 50V	0402
C555	2320564	CHIPCAP NP0 150P J 50V	0402
C556	2320752	CHIPCAP X7R 2N2 K 50V	0402
C557	2320560	CHIPCAP NP0 100P J 50V	0402
C558	2320560	CHIPCAP NP0 100P J 50V	0402
C559	2320752	CHIPCAP X7R 2N2 K 50V	0402
C560	2320752	CHIPCAP X7R 2N2 K 50V	0402
C561	2320560	CHIPCAP NP0 100P J 50V	0402
C562	2320075	CHIPCAP X7R 470P J 50V	0603
C563	2320578	CHIPCAP X7R 560P J 50V	0402
C564	2320560	CHIPCAP NP0 100P J 50V	0402
C565	2310470	CHIPCAP NP0 270P J 50V	0805
C566	2320558	CHIPCAP NP0 82P J 50V	0402
C567	2310470	CHIPCAP NP0 270P J 50V	0805
C569	2320756	CHIPCAP X7R 3N3 K 50V	0402
C570	2320756	CHIPCAP X7R 3N3 K 50V	0402
C571	2320756	CHIPCAP X7R 3N3 K 50V	0402
C572	2310791	CHIPCAP X7R 33N M 50V	0805

Technical Documentation

Parts Lists

C573	2320560	CHIPCAP NP0 100P J 50V	0402
C574	2320560	CHIPCAP NP0 100P J 50V	0402
C575	2320530	CHIPCAP NP0 5P6 C 50V	0402
C580	2320744	CHIPCAP X7R 1N0 K 50V	0402
C581	2320516	CHIPCAP NP0 1P5 C 50V	0402
C582	2320516	CHIPCAP NP0 1P5 C 50V	0402
C601	2310784	CHIPCAP X7R 100N K 25V	0805
C602	2312410	CHIPCAP X5R 1U0 K 16V	1206
C603	2312410	CHIPCAP X5R 1U0 K 16V	1206
C604	2310784	CHIPCAP X7R 100N K 25V	0805
C605	2312410	CHIPCAP X5R 1U0 K 16V	1206
C606	2310791	CHIPCAP X7R 33N M 50V	0805
C607	2310784	CHIPCAP X7R 100N K 25V	0805
C608	2310784	CHIPCAP X7R 100N K 25V	0805
C609	2310784	CHIPCAP X7R 100N K 25V	0805
C701	2320548	CHIPCAP NP0 33P J 50V	0402
C702	2320560	CHIPCAP NP0 100P J 50V	0402
C703	2320756	CHIPCAP X7R 3N3 K 50V	0402
C704	2320516	CHIPCAP NP0 1P5 C 50V	0402
C705	2320514	CHIPCAP NP0 1P2 C 50V	0402
C710	2320744	CHIPCAP X7R 1N0 K 50V	0402
C711	2320536	CHIPCAP NP0 10P J 50V	0402
C712	2320522	CHIPCAP NP0 2P7 C 50V	0402
C714	2320534	CHIPCAP NP0 8P2 C 50V	0402
C715	2320522	CHIPCAP NP0 2P7 C 50V	0402
C717	2320524	CHIPCAP NP0 3P3 C 50V	0402
C718	2320518	CHIPCAP NP0 1P8 C 50V	0402
C720	2320544	CHIPCAP NP0 22P J 50V	0402
C721	2320744	CHIPCAP X7R 1N0 K 50V	0402
C725	2320544	CHIPCAP NP0 22P J 50V	0402
C726	2320516	CHIPCAP NP0 1P5 C 50V	0402
C727	2320560	CHIPCAP NP0 100P J 50V	0402
C729	2320524	CHIPCAP NP0 3P3 C 50V	0402
C730	2320544	CHIPCAP NP0 22P J 50V	0402
C735	2320526	CHIPCAP NP0 3P9 C 50V	0402
C736	2320516	CHIPCAP NP0 1P5 C 50V	0402
C737	2320560	CHIPCAP NP0 100P J 50V	0402
C738	2320560	CHIPCAP NP0 100P J 50V	0402
C739	2320584	CHIPCAP X7R 1N0 J 50V	0402
C740	2320524	CHIPCAP NP0 3P3 C 50V	0402
C741	2320544	CHIPCAP NP0 22P J 50V	0402
C755	2320524	CHIPCAP NP0 3P3 C 50V	0402

C756	2320584	CHIPCAP X7R 1N0 J 50V	0402
C758	2320560	CHIPCAP NP0 100P J 50V	0402
C759	2320584	CHIPCAP X7R 1N0 J 50V	0402
C760	2320544	CHIPCAP NP0 22P J 50V	0402
C761	2320522	CHIPCAP NP0 2P7 C 50V	0402
C763	2610011	CHIPTCAP 330U K 10V	6.9X6X3.5
C765	2320584	CHIPCAP X7R 1N0 J 50V	0402
C766	2320522	CHIPCAP NP0 2P7 C 50V	0402
C767	2320578	CHIPCAP X7R 560P J 50V	0402
C768	2320554	CHIPCAP NP0 56P J 50V	0402
C769	2320584	CHIPCAP X7R 1N0 J 50V	0402
C770	2320584	CHIPCAP X7R 1N0 J 50V	0402
C771	2320536	CHIPCAP NP0 10P J 50V	0402
C772	2320524	CHIPCAP NP0 3P3 C 50V	0402
C774	2320530	CHIPCAP NP0 5P6 C 50V	0402
C775	2320518	CHIPCAP NP0 1P8 C 50V	0402
C776	2320508	CHIPCAP NP0 1P0 C 50V	0402
C780	2320536	CHIPCAP NP0 10P J 50V	0402
C781	2320536	CHIPCAP NP0 10P J 50V	0402
C782	2320546	CHIPCAP NP0 27P J 50V	0402
C783	2320546	CHIPCAP NP0 27P J 50V	0402
C784	2320756	CHIPCAP X7R 3N3 K 50V	0402
C791	2610200	CHIPTCAP 2U2 M 6V3	2.0X1.3X1.2
C793	2610200	CHIPTCAP 2U2 M 6V3	2.0X1.3X1.2
C794	2610200	CHIPTCAP 2U2 M 6V3	2.0X1.3X1.2
C795	2610100	CHIPTCAP 1U M 10V	2.0X1.3X1.2
C796	2610011	CHIPTCAP 330U K 10V	6.9X6X3.5
C797	2610011	CHIPTCAP 330U K 10V	6.9X6X3.5
C798	2610011	CHIPTCAP 330U K 10V	6.9X6X3.5
C799	2610011	CHIPTCAP 330U K 10V	6.9X6X3.5
C800	2604079	CHIPTCAP 0U22 M 35V	3.2X1.6X1.6
C801	2310791	CHIPCAP X7R 33N M 50V	0805
C803	2320568	CHIPCAP X7R 220P J 50V	0402
C804	2320552	CHIPCAP NP0 47P J 50V	0402
C805	2320728	CHIPCAP X7R 220P K 50V	0402
C806	2610100	CHIPTCAP 1U M 10V	2.0X1.3X1.2
C807	2320756	CHIPCAP X7R 3N3 K 50V	0402
C808	2320756	CHIPCAP X7R 3N3 K 50V	0402
C809	2320744	CHIPCAP X7R 1N0 K 50V	0402
C810	2320728	CHIPCAP X7R 220P K 50V	0402
C820	2320560	CHIPCAP NP0 100P J 50V	0402
C821	2310248	CHIPCAP NP0 4N7 J 50V	1206

Technical Documentation

Parts Lists

C822	2320466	CHIPCAP NP0 220P J 50V	0603
C823	2310248	CHIPCAP NP0 4N7 J 50V	1206
C824	2320564	CHIPCAP NP0 150P J 50V	0402
C828	2610100	CHIPTCAP 1U M 10V 2.0X1.3X1.2	
C829	2320756	CHIPCAP X7R 3N3 K 50V	0402
C830	2320560	CHIPCAP NP0 100P J 50V	0402
C831	2610100	CHIPTCAP 1U M 10V 2.0X1.3X1.2	
C832	2320756	CHIPCAP X7R 3N3 K 50V	0402
C840	2320530	CHIPCAP NP0 5P6 C 50V	0402
C841	2610100	CHIPTCAP 1U M 10V 2.0X1.3X1.2	
C842	2320584	CHIPCAP X7R 1N0 J 50V	0402
C843	2320544	CHIPCAP NP0 22P J 50V	0402
C844	2320536	CHIPCAP NP0 10P J 50V	0402
C845	2320536	CHIPCAP NP0 10P J 50V	0402
C846	2320536	CHIPCAP NP0 10P J 50V	0402
C847	2320520	CHIPCAP NP0 2P2 C 50V	0402
C848	2320560	CHIPCAP NP0 100P J 50V	0402
C849	2320744	CHIPCAP X7R 1N0 K 50V	0402
C850	2320534	CHIPCAP NP0 8P2 C 50V	0402
C851	2320534	CHIPCAP NP0 8P2 C 50V	0402
C862	2320602	CHIPCAP NP0 4P7 C 50V	0402
C864	2320560	CHIPCAP NP0 100P J 50V	0402
C865	2320560	CHIPCAP NP0 100P J 50V	0402
D300	4340126	TC7S00F 1XNAND 2INPUT CMOS	SSO5
D301	4340126	TC7S00F 1XNAND 2INPUT CMOS	SSO5
G300	4510044	SMCRYST 60.2MHZ+-50PPM7.3X4.9X1.1	
L200	3641262	FERRITE BEAD 30R/100MHZ 2A	1206
L201	3606946	FERRITE BEAD 0.2R 26R/100MHZ	1206
L202	3641262	FERRITE BEAD 30R/100MHZ 2A	1206
L203	3641548	CHIP COIL 100N K Q40/150MHZ	0805
L230	3606946	FERRITE BEAD 0.2R 26R/100MHZ	1206
L231	3606946	FERRITE BEAD 0.2R 26R/100MHZ	1206
L232	3606946	FERRITE BEAD 0.2R 26R/100MHZ	1206
L300	3641302	CHIP COIL 470NH J Q30/25MHZ	1008
L511	3641546	CHIP COIL 82N K Q40/150MHZ	0805
L530	3641536	CHIP COIL 33N M Q40/250MHZ	0805
L531	3608414	CHIP COIL 560NH J	1206
L532	3641560	CHIP COIL 220N K Q30/100MHZ	0805
L541	3641550	CHIP COIL 120N K Q35/150MHZ	0805
L542	3608238	CHIP COIL 180NH K	1206
L543	3608319	CHIP COIL 270NH K	1206
L544	3608319	CHIP COIL 270NH K	1206

L545	3608238	CHIP COIL 180NH K	1206
L551	3641522	CHIP COIL 6N8 M Q50/250MHZ	0805
L700	3606946	FERRITE BEAD 0.2R 26R/100MHZ	1206
L710	3641536	CHIP COIL 33N M Q40/250MHZ	0805
L711	3641536	CHIP COIL 33N M Q40/250MHZ	0805
L800	3641206	CHIP COIL 3U3 K Q25/7.96MHZ	1008
L801	3641206	CHIP COIL 3U3 K Q25/7.96MHZ	1008
L840	3641572	CHIP COIL 22N J Q45/250MHZ	0805
L841	3641522	CHIP COIL 6N8 M Q50/250MHZ	0805
N230	4375588	PSL+ POWER SUPPLY VERSION D	SO24W
N400	4340303	LM4861 AF AMP 0.5W 2.7-5.5V	SO8S
N551	4370091	CRFRT_ST TX.MOD+RXIF+PWC	SQFP44
N601	4370095	CRFCONTF 8XREG4.5V VREF2V5	VSOP28
N790	4349576	ICL7660 V.CONV+1.5-12VTO NEG	SO8
N820	4340021	LMX2331 2XSYNTH 2G/510MHZ	SSO20
T300	3640402	TRANSFORMER 4:1BALUN 800MHZ	SMD
V200	4111824	DI BAS16 75V 250MA 6NS	SOT23
V201	4111824	DI BAS16 75V 250MA 6NS	SOT23
V202	4100285	DIX2 BAV99 70V 200MA IN SER.	SOT23
V230	4210020	TR BCP69-25 P 20V 1A >160	SOT223
V231	4200877	TR BCX51-16 P 45V 1.5A 1W	SOT89
V232	4210020	TR BCP69-25 P 20V 1A >160	SOT223
V250	4210020	TR BCP69-25 P 20V 1A >160	SOT223
V251	4110074	SCH DI STPS340U 40V 3A	SOD6
V253	4200226	TR BCV27 N 30V 300MA DARL	SOT23
V254	4200226	TR BCV27 N 30V 300MA DARL	SOT23
V255	4200909	TR BC858B/BCW30 P 30V 100MA	SOT23
V256	4110126	ZDI BZX84 4.3V 5% 0.3W	SOT23
V257	4202671	FET BST82 N 80V 175MA 7R	SOT23
V300	4210079	TR BFS17 N 15V 50MA 1.3GHZ	SOT23
V301	4210079	TR BFS17 N 15V 50MA 1.3GHZ	SOT23
V302	4210050	TR DTA114EE P RB=RBE=10K	EM3
V303	4210100	TR BC848W N 30V 0.1A100MHZ	SOT323
V320	4110014	SCHDIX2 BAS70-07 70V 15MA	SOT143
V330	4210100	TR BC848W N 30V 0.1A100MHZ	SOT323
V331	4200909	TR BC858B/BCW30 P 30V 100MA	SOT23
V370	4210102	TR BC858W P 30V 100MA 200MWS	SOT323
V380	4200829	TR BC859C P 30V 0.1A	SOT23
V381	4200811	TR BC849C N 30V 0.1A	SOT23
V400	4200917	TR BC848B/BCW32 N 30V 100MA	SOT23
V420	4117998	PRECISION VOLTAGE REFERENCE	4.096
V460	4110014	SCHDIX2 BAS70-07 70V 15MA	SOT143

V501	4210046	TR BFP182 N 20V 35MA 8GHZ SOT143
V502	4210102	TR BC858W P 30V 100MA 200MWSOT323
V503	4210100	TR BC848W N 30V 0.1A100MHZ SOT323
V504	4210066	TR BFR93AW N 12V 35MA 5GHZ SOT323
V511	4115802	SCH DIX2 4V 30MA <1PF SER SOT23
V512	4210066	TR BFR93AW N 12V 35MA 5GHZ SOT323
V521	4210066	TR BFR93AW N 12V 35MA 5GHZ SOT323
V531	4100567	SCHDIX2 BAS70-04 70V15MA SERSOT23
V532	4210066	TR BFR93AW N 12V 35MA 5GHZ SOT323
V541	4210066	TR BFR93AW N 12V 35MA 5GHZ SOT323
V701	4210058	TR MRF947 N 10V 50MA 8GHZ SOT323
V702	4100567	SCHDIX2 BAS70-04 70V15MA SERSOT23
V710	4210046	TR BFP182 N 20V 35MA 8GHZ SOT143
V725	4210074	TR BFP420 N 4.5V35MA 20GHZ SOT343
V726	4210102	TR BC858W P 30V 100MA 200MWSOT323
V735	4217070	TRX2 IMZ1 N&P ISOLATED IMD
V736	4210090	TR BFG540/X N 15V 129MA 9G SOT143
V737	4210100	TR BC848W N 30V 0.1A100MHZ SOT323
V738	4210020	TR BCP69-25 P 20V 1A >160 SOT223
V739	4217070	TRX2 IMZ1 N&P ISOLATED IMD
V740	4210102	TR BC858W P 30V 100MA 200MWSOT323
V741	4210100	TR BC848W N 30V 0.1A100MHZ SOT323
V755	4210102	TR BC858W P 30V 100MA 200MWSOT323
V756	4210343	FET GAAS CLY2 9V 0.6A 3GHZ MW6
V765	4211485	FET GAAS N 6V2A 1.8GHZ33DBM SOT89
V766	4219908	TRX2 UMT1 P 40V 0.1A140MHZ SOT363
V780	4110014	SCHDIX2 BAS70-07 70V 15MA SOT143
V790	4100285	DIX2 BAV99 70V 200MA IN SER.SOT23
V791	4210102	TR BC858W P 30V 100MA 200MWSOT323
V792	4107040	ZDI BZX84 6.2V 5% 0.3W SOT23
V800	4110081	CAP.DI BB640 3/62PF 28/1V SOD323
V801	4210066	TR BFR93AW N 12V 35MA 5GHZ SOT323
V802	4210066	TR BFR93AW N 12V 35MA 5GHZ SOT323
V840	4210066	TR BFR93AW N 12V 35MA 5GHZ SOT323
V841	4210066	TR BFR93AW N 12V 35MA 5GHZ SOT323
V842	4110018	CAP.DI BB135 30V 2.1/21PF SOD323
X201	5469203	SM CONN 2X22 F P0.8 PCB/PCB 9.0MM
X202	5409041	SM CONN BATTERY 4POL P2.54
X212	5469037	SM FLEX CONN 12POL P0.5 U.CONTACT
X400	5469031	SM CONN CHP2502-0101 1X2 M P1.25
X501	5429003	SM COAX CONN RECEP 50R 3GHZ 5X4.5
X503	5420460	COAX-CONN FEMALE 50OHM SWITCH IMS

Z500	4512047	DUPL 1710-1785/1805-1880MHZ 31X12
Z505	4550105	CER.FILT 1842.5+-37.5MHZ 8.9X4.8
Z541	4511028	SAW FILT 87+-0.12MHZ/13DB14.2X8.4
Z551	4510009	CER.FILT 13+-0.09MHZ 330R 7.3X3.3
Z713	4550103	CER.FILT 1747.5+-37.5MHZ 8.9X5
Z727	4550103	CER.FILT 1747.5+-37.5MHZ 8.9X5
	9854163	PCB GE9 121.0X55.0X1.0 M6 2/PA
	4510071	SMCRYST 26.000MHZ+-7/TSTAB+-10PPM
MCM1	0200865	SUBMODULE
MCM2	0200726	SUBMODULE

PDA Module – GP1

EDMS pn 0200709 Issue 3.1

Item	Code	Description	Value	Type
R065	1430822	Chip resistor	560 k	5 % 0.063 W 0402
R072	1430830	Chip resistor	1.0 M	5 % 0.063 W 0402
R074	1430142	Chip resistor	4.7	5 % 0.063 W 0603
R075	1430830	Chip resistor	1.0 M	5 % 0.063 W 0402
R076	1430826	Chip resistor	680 k	5 % 0.063 W 0402
R077	1430700	Chip resistor	10	5 % 0.063 W 0402
R078	1430183	Chip resistor	110 k	1 % 0.063 W 0603
R080	1430778	Chip resistor	10 k	5 % 0.063 W 0402
R081	1430804	Chip resistor	100 k	5 % 0.063 W 0402
R082	1430113	Chip resistor	348 k	1 % 0.063 W 0603
R083	1430822	Chip resistor	560 k	5 % 0.063 W 0402
R084	1430181	Chip resistor	30.9 k	1 % 0.063 W 0603
R085	1430142	Chip resistor	4.7	5 % 0.063 W 0603
R086	1430804	Chip resistor	100 k	5 % 0.063 W 0402
R087	1414526	Chip resistor	120 k	1 % 0.1 W 0805
R088	1430780	Chip resistor	12 k	5 % 0.063 W 0402
R089	1430131	Chip resistor	464 k	1 % 0.063 W 0603
R090	1430764	Chip resistor	3.3 k	5 % 0.063 W 0402
R092	1430820	Chip resistor	470 k	5 % 0.063 W 0402
R093	1820026	NTC resistor	100 k	5 % 0805
R094	1430830	Chip resistor	1.0 M	5 % 0.063 W 0402
R095	1430804	Chip resistor	100 k	5 % 0.063 W 0402
R096	1430796	Chip resistor	47 k	5 % 0.063 W 0402
R097	1820026	NTC resistor	100 k	5 % 0805
R098	1430820	Chip resistor	470 k	5 % 0.063 W 0402
R112	1430746	Chip resistor	560	5 % 0.063 W 0402
R113	1430746	Chip resistor	560	5 % 0.063 W 0402
R114	1430746	Chip resistor	560	5 % 0.063 W 0402
R115	1430746	Chip resistor	560	5 % 0.063 W 0402
R116	1430746	Chip resistor	560	5 % 0.063 W 0402
R117	1430746	Chip resistor	560	5 % 0.063 W 0402
R118	1430746	Chip resistor	560	5 % 0.063 W 0402
R119	1430746	Chip resistor	560	5 % 0.063 W 0402
R120	1430788	Chip resistor	22 k	5 % 0.063 W 0402
R121	1430788	Chip resistor	22 k	5 % 0.063 W 0402
R122	1430788	Chip resistor	22 k	5 % 0.063 W 0402
R123	1430788	Chip resistor	22 k	5 % 0.063 W 0402

R124	1430788	Chip resistor	22 k	5 % 0.063 W 0402
R125	1430788	Chip resistor	22 k	5 % 0.063 W 0402
R126	1430788	Chip resistor	22 k	5 % 0.063 W 0402
R127	1430788	Chip resistor	22 k	5 % 0.063 W 0402
R128	1430788	Chip resistor	22 k	5 % 0.063 W 0402
R129	1430788	Chip resistor	22 k	5 % 0.063 W 0402
R130	1430800	Chip resistor	68 k	5 % 0.063 W 0402
R131	1430800	Chip resistor	68 k	5 % 0.063 W 0402
R132	1430800	Chip resistor	68 k	5 % 0.063 W 0402
R134	1430788	Chip resistor	22 k	5 % 0.063 W 0402
R135	1430804	Chip resistor	100 k	5 % 0.063 W 0402
R136	1430778	Chip resistor	10 k	5 % 0.063 W 0402
R137	1430760	Chip resistor	1.8 k	5 % 0.063 W 0402
R138	1430804	Chip resistor	100 k	5 % 0.063 W 0402
R139	1430802	Chip resistor	82 k	5 % 0.063 W 0402
R140	1430135	Chip resistor	10 M	5 % 0.063 W 0603
R141	1430135	Chip resistor	10 M	5 % 0.063 W 0603
R143	1430788	Chip resistor	22 k	5 % 0.063 W 0402
R145	1430804	Chip resistor	100 k	5 % 0.063 W 0402
R146	1430135	Chip resistor	10 M	5 % 0.063 W 0603
R147	1430834	Chip resistor	3.3 M	5 % 0.063 W 0402
R148	1430804	Chip resistor	100 k	5 % 0.063 W 0402
R150	1430726	Chip resistor	100	5 % 0.063 W 0402
R151	1430726	Chip resistor	100	5 % 0.063 W 0402
R175	1430015	Chip resistor	470	5 % 0.063 W 0603
R176	1411282	Chip resistor	4.7	5 % 0.12 W 1206
R177	1430762	Chip resistor	2.2 k	5 % 0.063 W 0402
R180	1430714	Chip resistor	33	5 % 0.063 W 0402
R181	1430714	Chip resistor	33	5 % 0.063 W 0402
R182	1430714	Chip resistor	33	5 % 0.063 W 0402
R183	1430714	Chip resistor	33	5 % 0.063 W 0402
R184	1430714	Chip resistor	33	5 % 0.063 W 0402
R185	1430714	Chip resistor	33	5 % 0.063 W 0402
R186	1430714	Chip resistor	33	5 % 0.063 W 0402
R187	1430714	Chip resistor	33	5 % 0.063 W 0402
R188	1430714	Chip resistor	33	5 % 0.063 W 0402
R189	1430714	Chip resistor	33	5 % 0.063 W 0402
R192	1430714	Chip resistor	33	5 % 0.063 W 0402
R193	1430714	Chip resistor	33	5 % 0.063 W 0402
R194	1430714	Chip resistor	33	5 % 0.063 W 0402
R195	1430714	Chip resistor	33	5 % 0.063 W 0402
R900	1430726	Chip resistor	100	5 % 0.063 W 0402

Technical Documentation

Parts Lists

R901	1430722	Chip resistor	68	5 % 0.063 W 0402
R902	1430726	Chip resistor	100	5 % 0.063 W 0402
R903	1430722	Chip resistor	68	5 % 0.063 W 0402
R904	1430726	Chip resistor	100	5 % 0.063 W 0402
R905	1430722	Chip resistor	68	5 % 0.063 W 0402
R906	1430726	Chip resistor	100	5 % 0.063 W 0402
R907	1430722	Chip resistor	68	5 % 0.063 W 0402
R908	1430726	Chip resistor	100	5 % 0.063 W 0402
R909	1430722	Chip resistor	68	5 % 0.063 W 0402
R910	1430726	Chip resistor	100	5 % 0.063 W 0402
R911	1430722	Chip resistor	68	5 % 0.063 W 0402
R912	1430726	Chip resistor	100	5 % 0.063 W 0402
R913	1430722	Chip resistor	68	5 % 0.063 W 0402
R914	1430726	Chip resistor	100	5 % 0.063 W 0402
R915	1430722	Chip resistor	68	5 % 0.063 W 0402
R916	1430726	Chip resistor	100	5 % 0.063 W 0402
R917	1430722	Chip resistor	68	5 % 0.063 W 0402
R922	1430726	Chip resistor	100	5 % 0.063 W 0402
R923	1430726	Chip resistor	100	5 % 0.063 W 0402
R924	1430726	Chip resistor	100	5 % 0.063 W 0402
R925	1430726	Chip resistor	100	5 % 0.063 W 0402
R926	1430726	Chip resistor	100	5 % 0.063 W 0402
R927	1430722	Chip resistor	68	5 % 0.063 W 0402
R928	1430726	Chip resistor	100	5 % 0.063 W 0402
R929	1430726	Chip resistor	100	5 % 0.063 W 0402
R930	1430726	Chip resistor	100	5 % 0.063 W 0402
R931	1430726	Chip resistor	100	5 % 0.063 W 0402
R932	1430726	Chip resistor	100	5 % 0.063 W 0402
R933	1430722	Chip resistor	68	5 % 0.063 W 0402
R936	1430714	Chip resistor	33	5 % 0.063 W 0402
R937	1430714	Chip resistor	33	5 % 0.063 W 0402
R938	1430726	Chip resistor	100	5 % 0.063 W 0402
R939	1430726	Chip resistor	100	5 % 0.063 W 0402
R940	1430726	Chip resistor	100	5 % 0.063 W 0402
R941	1430722	Chip resistor	68	5 % 0.063 W 0402
R942	1430726	Chip resistor	100	5 % 0.063 W 0402
R943	1430726	Chip resistor	100	5 % 0.063 W 0402
R944	1430726	Chip resistor	100	5 % 0.063 W 0402
R945	1430726	Chip resistor	100	5 % 0.063 W 0402
R948	1430726	Chip resistor	100	5 % 0.063 W 0402
R949	1430726	Chip resistor	100	5 % 0.063 W 0402
R950	1430726	Chip resistor	100	5 % 0.063 W 0402

R951	1430726	Chip resistor	100	5 % 0.063 W 0402	
R952	1430726	Chip resistor	100	5 % 0.063 W 0402	
R953	1430726	Chip resistor	100	5 % 0.063 W 0402	
R954	1430726	Chip resistor	100	5 % 0.063 W 0402	
R955	1430726	Chip resistor	100	5 % 0.063 W 0402	
R956	1430726	Chip resistor	100	5 % 0.063 W 0402	
R970	1430726	Chip resistor	100	5 % 0.063 W 0402	
R971	1430726	Chip resistor	100	5 % 0.063 W 0402	
R972	1430726	Chip resistor	100	5 % 0.063 W 0402	
R973	1430726	Chip resistor	100	5 % 0.063 W 0402	
R974	1430788	Chip resistor	22 k	5 % 0.063 W 0402	
R975	1825001	Chip varistor vwm18v vc40v	0603		0603
R976	1825001	Chip varistor vwm18v vc40v	0603		0603
R980	1825001	Chip varistor vwm18v vc40v	0603		0603
R982	1825001	Chip varistor vwm18v vc40v	0603		0603
R983	1825001	Chip varistor vwm18v vc40v	0603		0603
R984	1430726	Chip resistor	100	5 % 0.063 W 0402	
R985	1430726	Chip resistor	100	5 % 0.063 W 0402	
R986	1825001	Chip varistor vwm18v vc40v	0603		0603
R987	1430752	Chip resistor	820	5 % 0.063 W 0402	
C068	2320544	Ceramic cap.	22 p	5 % 50 V 0402	
C069	2320544	Ceramic cap.	22 p	5 % 50 V 0402	
C079	2320544	Ceramic cap.	22 p	5 % 50 V 0402	
C080	2610009	Tantalum cap.	1.5 u	20 %	
C081	2604431	Tantalum cap.	10 u	20 % 16 V 6.0x3.2x2.5	
C082	2310495	Ceramic cap.	390 p	5 % 50 V 0805	
C083	2610103	Tantalum cap.	100 u	20 % 16 V 7.3x4.3x4.1	
C084	2610105	Tantalum cap.	100 u	20 % 10 V 7.3x4.3x2.9	
C085	2320120	Ceramic cap.	22 n	10 % 25 V 0603	
C086	2310784	Ceramic cap.	100 n	10 % 25 V 0805	
C087	2310784	Ceramic cap.	100 n	10 % 25 V 0805	
C088	2310784	Ceramic cap.	100 n	10 % 25 V 0805	
C089	2610109	Tantalum cap.	22 u	20 % 25 V 7.3x4.3x2.9	
C090	2320107	Ceramic cap.	10 n	5 % 50 V 0603	
C091	2320584	Ceramic cap.	1.0 n	5 % 50 V 0402	
C093	2320107	Ceramic cap.	10 n	5 % 50 V 0603	
C094	2320107	Ceramic cap.	10 n	5 % 50 V 0603	
C095	2320107	Ceramic cap.	10 n	5 % 50 V 0603	
C096	2310784	Ceramic cap.	100 n	10 % 25 V 0805	
C097	2320107	Ceramic cap.	10 n	5 % 50 V 0603	
C098	2320584	Ceramic cap.	1.0 n	5 % 50 V 0402	
C099	2320584	Ceramic cap.	1.0 n	5 % 50 V 0402	

Technical Documentation

Parts Lists

C130	2310784	Ceramic cap.	100 n	10 % 25 V 0805
C131	2310784	Ceramic cap.	100 n	10 % 25 V 0805
C132	2310784	Ceramic cap.	100 n	10 % 25 V 0805
C133	2310784	Ceramic cap.	100 n	10 % 25 V 0805
C134	2310784	Ceramic cap.	100 n	10 % 25 V 0805
C135	2310784	Ceramic cap.	100 n	10 % 25 V 0805
C136	2320131	Ceramic cap.	33 n	10 % 16 V 0603
C137	2320131	Ceramic cap.	33 n	10 % 16 V 0603
C139	2320560	Ceramic cap.	100 p	5 % 50 V 0402
C140	2320131	Ceramic cap.	33 n	10 % 16 V 0603
C141	2310784	Ceramic cap.	100 n	10 % 25 V 0805
C142	2320107	Ceramic cap.	10 n	5 % 50 V 0603
C143	2310784	Ceramic cap.	100 n	10 % 25 V 0805
C144	2320107	Ceramic cap.	10 n	5 % 50 V 0603
C147	2610200	Tantalum cap.	2.2 u	20 % 2.0x1.3x1.2
C148	2610200	Tantalum cap.	2.2 u	20 % 2.0x1.3x1.2
C149	2610200	Tantalum cap.	2.2 u	20 % 2.0x1.3x1.2
C150	2320592	Ceramic cap.	2.2 n	5 % 50 V 0402
C151	2320588	Ceramic cap.	1.5 n	5 % 50 V 0402
C152	2320120	Ceramic cap.	22 n	10 % 25 V 0603
C153	2320588	Ceramic cap.	1.5 n	5 % 50 V 0402
C154	2320120	Ceramic cap.	22 n	10 % 25 V 0603
C155	2320544	Ceramic cap.	22 p	5 % 50 V 0402
C156	2320544	Ceramic cap.	22 p	5 % 50 V 0402
C157	2320131	Ceramic cap.	33 n	10 % 16 V 0603
C158	2320131	Ceramic cap.	33 n	10 % 16 V 0603
C159	2310784	Ceramic cap.	100 n	10 % 25 V 0805
C160	2310784	Ceramic cap.	100 n	10 % 25 V 0805
C161	2310784	Ceramic cap.	100 n	10 % 25 V 0805
C162	2310784	Ceramic cap.	100 n	10 % 25 V 0805
C163	2310784	Ceramic cap.	100 n	10 % 25 V 0805
C164	2310784	Ceramic cap.	100 n	10 % 25 V 0805
C165	2310784	Ceramic cap.	100 n	10 % 25 V 0805
C166	2310784	Ceramic cap.	100 n	10 % 25 V 0805
C167	2310784	Ceramic cap.	100 n	10 % 25 V 0805
C180	2610100	Tantalum cap.	1 u	20 % 10 V 2.0x1.3x1.2
C181	2310784	Ceramic cap.	100 n	10 % 25 V 0805
C182	2310784	Ceramic cap.	100 n	10 % 25 V 0805
C183	2310784	Ceramic cap.	100 n	10 % 25 V 0805
C184	2310784	Ceramic cap.	100 n	10 % 25 V 0805
C185	2310784	Ceramic cap.	100 n	10 % 25 V 0805
C900	2320560	Ceramic cap.	100 p	5 % 50 V 0402

C901	2320560	Ceramic cap.	100 p	5 % 50 V 0402
C902	2320560	Ceramic cap.	100 p	5 % 50 V 0402
C903	2320560	Ceramic cap.	100 p	5 % 50 V 0402
C904	2320560	Ceramic cap.	100 p	5 % 50 V 0402
C905	2320560	Ceramic cap.	100 p	5 % 50 V 0402
C906	2320560	Ceramic cap.	100 p	5 % 50 V 0402
C907	2320560	Ceramic cap.	100 p	5 % 50 V 0402
C908	2320560	Ceramic cap.	100 p	5 % 50 V 0402
C911	2320560	Ceramic cap.	100 p	5 % 50 V 0402
C912	2320560	Ceramic cap.	100 p	5 % 50 V 0402
C913	2320560	Ceramic cap.	100 p	5 % 50 V 0402
C914	2320560	Ceramic cap.	100 p	5 % 50 V 0402
C915	2320560	Ceramic cap.	100 p	5 % 50 V 0402
C916	2320560	Ceramic cap.	100 p	5 % 50 V 0402
C917	2320560	Ceramic cap.	100 p	5 % 50 V 0402
C918	2320560	Ceramic cap.	100 p	5 % 50 V 0402
C920	2320560	Ceramic cap.	100 p	5 % 50 V 0402
C921	2320560	Ceramic cap.	100 p	5 % 50 V 0402
C922	2320560	Ceramic cap.	100 p	5 % 50 V 0402
C923	2320560	Ceramic cap.	100 p	5 % 50 V 0402
C924	2320560	Ceramic cap.	100 p	5 % 50 V 0402
C926	2320560	Ceramic cap.	100 p	5 % 50 V 0402
C927	2320560	Ceramic cap.	100 p	5 % 50 V 0402
C928	2320560	Ceramic cap.	100 p	5 % 50 V 0402
C929	2320560	Ceramic cap.	100 p	5 % 50 V 0402
C930	2320560	Ceramic cap.	100 p	5 % 50 V 0402
C931	2320560	Ceramic cap.	100 p	5 % 50 V 0402
C933	2320560	Ceramic cap.	100 p	5 % 50 V 0402
C970	2310752	Ceramic cap.	10 n	20 % 50 V 0805
C971	2320544	Ceramic cap.	22 p	5 % 50 V 0402
C972	2320560	Ceramic cap.	100 p	5 % 50 V 0402
L080	3640025	Chip coil	20 % 500 mA Q=30/1M	1812
L081	3640019	Chip coil 56 u	10 % 200 mA Q=35	1812
L082	3640027	Chip coil 22 u	20 % 0.81 A 6.2x6.6x3	
L970	3606946	Ferrite bead 0.2r 26r/100mhz		1206
B130	4510003	Crystal 32.768 k +-20PPM		8x3.8
G087	4700029	Battery cr2320 li 3v 130mah		d23x2
Z130	3640021	Filt z>60r/100m 0r2max 0.5a		0603
Z131	3640021	Filt z>60r/100m 0r2max 0.5a		0603
V080	4211264	MosFet 2SJ16		SOT23
V081	4202671	MosFet BST82	n-ch 80 V 175 mA	SOT23
V082	4211264	MosFet 2SJ16		SOT23

V084	4117998	Precision voltage reference 4.096	
V085	4100189	Schottky diode BAS 70-05 70V 15mA SOT23	
V086	4210100	Transistor BC848W npn 30V SOT323	
V087	4210100	Transistor BC848W npn 30V SOT323	
V088	4110063	Schottky diode MBR5140 DO214AA	
V089	4111853	Diode LS4150 50V 600mA 4 ns QMELF	
V130	4200226	Darl. transistor BCV27 npn 30V 300mA SOT23	
V131	4110078	Schdix2 bas70-05w 70v 70ma sot323	SOT323
V135	4200226	Darl. transistor BCV27 npn 30V 300mA SOT23	
V970	4110028	Trans. supr. 16V 23A 600W DO214AA	
D080	4340121	Max809t mcu reset/3.08v	SOT23
D130	4370135	IC, MCU TQFP176	
D160	4340111	Dram 1mx16bit 60ns 3v3	TSOP2/44
D161	4340207	IC, 1mx16bit120ns 3.3v tsop E28F016	TSOP56
D162	4340205	IC, flash memory E28F016SV	TSOP56
D163	4340205	IC, flash memory E28F016SV	TSOP56
D180	4340091	Max3222 4xrs232 transceiver	VSO20
N080	4340113	IC, regulator LP2980IM5X-5.0	5V 50mA SOT23
N081	4340129	Max763a sw reg 3.3v 0.5 a 5% so8s	SO8S
N082	4340123	IC, 2 x comp. LMC6762	SO8S
N083	4340109	Max772 sw reg 2-16.5v max 1a so8s	SO8S
N180	4860013	Tfds3020 irda sir ir tx/rx sm8pin	SM8PIN
S170	5308940	Reed relay 1a 10-25at 0.5a 2.5x1	2.5x10
X101	5449506	Pin header 1x02 1.25mm angle smd	SMD
X102	5469207	SM, conn 2x22 m p0.8 pcb/pcb 9.0	9.0MM
X110	5469019	SM, flex conn sfv 33pol p0.5 u.c	U.CON
X121	5469017	SM, system conn 12pol m p1.27	
	9854108	PCB GP1 170.9X51.0X1.0 M8 2/PA	

User Interface – GK2

EDMS pn 0200708 issue 3.0

Item	Code	Description	Value	Type
R001	1430063	Chip resistor	12 k	5 % 0.063 W 0603
R002	1430063	Chip resistor	12 k	5 % 0.063 W 0603
R003	1430075	Chip resistor	33 k	5 % 0.063 W 0603
R004	1430063	Chip resistor	12 k	5 % 0.063 W 0603
R005	1430063	Chip resistor	12 k	5 % 0.063 W 0603
R006	1430085	Chip resistor	82 k	5 % 0.063 W 0603
R007	1430057	Chip resistor	8.2 k	5 % 0.063 W 0603
R008	1430076	Chip resistor	36 k	5 % 0.063 W 0603
R010	1430065	Chip resistor	10 k	5 % 0.063 W 0603
R011	1430065	Chip resistor	10 k	5 % 0.063 W 0603
R012	1430065	Chip resistor	10 k	5 % 0.063 W 0603
R013	1430065	Chip resistor	10 k	5 % 0.063 W 0603
R014	1430065	Chip resistor	10 k	5 % 0.063 W 0603
R015	1430087	Chip resistor	100 k	5 % 0.063 W 0603
R016	1430087	Chip resistor	100 k	5 % 0.063 W 0603
R017	1430087	Chip resistor	100 k	5 % 0.063 W 0603
R018	1430087	Chip resistor	100 k	5 % 0.063 W 0603
R019	1430087	Chip resistor	100 k	5 % 0.063 W 0603
R020	1430087	Chip resistor	100 k	5 % 0.063 W 0603
R021	1430051	Chip resistor	4.7 k	5 % 0.063 W 0603
R022	1430051	Chip resistor	4.7 k	5 % 0.063 W 0603
R030	1430045	Chip resistor	2.7 k	5 % 0.063 W 0603
R031	1430043	Chip resistor	2.2 k	5 % 0.063 W 0603
R032	1430087	Chip resistor	100 k	5 % 0.063 W 0603
R033	1430165	Chip resistor	39	5 % 0.063 W 0603
R034	1430165	Chip resistor	39	5 % 0.063 W 0603
R035	1430165	Chip resistor	39	5 % 0.063 W 0603
R036	1430165	Chip resistor	39	5 % 0.063 W 0603
C001	2604248	Tantalum cap.	4.7 u	20 % 16 V 6.0x3.2x2.5
C002	2604248	Tantalum cap.	4.7 u	20 % 16 V 6.0x3.2x2.5
C003	2307816	Ceramic cap.	47 n	20 % 25 V 0805
C004	2307816	Ceramic cap.	47 n	20 % 25 V 0805
C005	2307816	Ceramic cap.	47 n	20 % 25 V 0805
C006	2307816	Ceramic cap.	47 n	20 % 25 V 0805
C007	2307816	Ceramic cap.	47 n	20 % 25 V 0805
C008	2307816	Ceramic cap.	47 n	20 % 25 V 0805
C009	2307816	Ceramic cap.	47 n	20 % 25 V 0805

C010	2604431	Tantalum cap.	10 u	20 % 16 V 6.0x3.2x2.5
C011	2320107	Ceramic cap.	10 n	5 % 50 V 0603
C023	2320043	Ceramic cap.	22 p	5 % 50 V 0603
C025	2320043	Ceramic cap.	22 p	5 % 50 V 0603
C026	2320043	Ceramic cap.	22 p	5 % 50 V 0603
C027	2320043	Ceramic cap.	22 p	5 % 50 V 0603
C028	2320043	Ceramic cap.	22 p	5 % 50 V 0603
C029	2310375	Ceramic cap.	39 p	5 % 50 V 0805
L001	3641520	Chip coil	3 n	20 % Q=50/250 MHz 0805
L002	3640013	Chip coil	8 n	5 % Q=50/250 MHz 0805
V011	4864388	Led	Green	0603
V012	4864388	Led	Green	0603
V013	4864388	Led	Green	0603
V014	4864388	Led	Green	0603
V015	4864388	Led	Green	0603
V016	4864388	Led	Green	0603
V017	4864388	Led	Green	0603
V018	4864388	Led	Green	0603
V019	4864388	Led	Green	0603
V020	4864388	Led	Green	0603
V021	4864388	Led	Green	0603
V022	4864388	Led	Green	0603
V023	4864388	Led	Green	0603
V024	4864388	Led	Green	0603
V026	4864388	Led	Green	0603
V027	4864388	Led	Green	0603
V028	4864388	Led	Green	0603
V029	4864388	Led	Green	0603
V030	4864388	Led	Green	0603
V031	4864388	Led	Green	0603
V032	4864388	Led	Green	0603
V033	4864388	Led	Green	0603
V034	4864388	Led	Green	0603
V036	4111824	Diode	BAS16	75 V 250 mA 6 ns SOT23
V038	4864388	Led	Green	0603
V040	4200811	Transistor	BC849C	nnp 30 V 0.1 A SOT23
V041	4200836	Transistor	BCX19	nnp 50 V 0.5 A SOT23
V042	4200836	Transistor	BCX19	nnp 50 V 0.5 A SOT23
V043	4200836	Transistor	BCX19	nnp 50 V 0.5 A SOT23
V044	4200836	Transistor	BCX19	nnp 50 V 0.5 A SOT23
S036	5200120	Push button switch	6.4x5.2 smd	
X001	5469021	SM, flex conn		

X010	5469015	SM, flex conn sfv 12pol p0.5 loc	LOCK
X035	5429003	SM, coax conn recep 50r 3ghz 5x4	5x4.5
X040	9510168	Antenna contact b11114	
	4850038	IC, lcd 42dotm 3x7sgm 57ind DSL-12 EU	
	9457468	Lightguide rae-1 dmc00310	
	9795025	Keydome diam 5.6x20/sheet rae-1	RAE-1
	9854109	PCB GK2 165X51X0.6 M4 2/PA	
	9854109	PC board GK2 165x51x0.6 m4 2/pa	

User Interface – GK2-1

EDMS pn 0201034 issue 2.1

Item	Code	Description	Value	Type
R031	1430043	Chip resistor	2.2 k	5 % 0.063 W 0603
R030	1430045	Chip resistor	2.7 k	5 % 0.063 W 0603
R021	1430051	Chip resistor	4.7 k	5 % 0.063 W 0603
R022	1430051	Chip resistor	4.7 k	5 % 0.063 W 0603
R007	1430057	Chip resistor	8.2 k	5 % 0.063 W 0603
R001	1430063	Chip resistor	12 k	5 % 0.063 W 0603
R002	1430063	Chip resistor	12 k	5 % 0.063 W 0603
R004	1430063	Chip resistor	12 k	5 % 0.063 W 0603
R005	1430063	Chip resistor	12 k	5 % 0.063 W 0603
R010	1430065	Chip resistor	10 k	5 % 0.063 W 0603
R011	1430065	Chip resistor	10 k	5 % 0.063 W 0603
R012	1430065	Chip resistor	10 k	5 % 0.063 W 0603
R013	1430065	Chip resistor	10 k	5 % 0.063 W 0603
R014	1430065	Chip resistor	10 k	5 % 0.063 W 0603
R003	1430075	Chip resistor	33 k	5 % 0.063 W 0603
R008	1430076	Chip resistor	36 k	5 % 0.063 W 0603
R006	1430085	Chip resistor	82 k	5 % 0.063 W 0603
R015	1430087	Chip resistor	100 k	5 % 0.063 W 0603
R016	1430087	Chip resistor	100 k	5 % 0.063 W 0603
R017	1430087	Chip resistor	100 k	5 % 0.063 W 0603
R018	1430087	Chip resistor	100 k	5 % 0.063 W 0603
R019	1430087	Chip resistor	100 k	5 % 0.063 W 0603
R020	1430087	Chip resistor	100 k	5 % 0.063 W 0603
R032	1430087	Chip resistor	100 k	5 % 0.063 W 0603
R033	1430165	Chip resistor	39	5 % 0.063 W 0603
R034	1430165	Chip resistor	39	5 % 0.063 W 0603
R035	1430165	Chip resistor	39	5 % 0.063 W 0603
R036	1430165	Chip resistor	39	5 % 0.063 W 0603
C003	2307816	Ceramic cap.	47 n	20 % 25 V 0805
C004	2307816	Ceramic cap.	47 n	20 % 25 V 0805
C005	2307816	Ceramic cap.	47 n	20 % 25 V 0805
C006	2307816	Ceramic cap.	47 n	20 % 25 V 0805
C007	2307816	Ceramic cap.	47 n	20 % 25 V 0805
C008	2307816	Ceramic cap.	47 n	20 % 25 V 0805
C009	2307816	Ceramic cap.	47 n	20 % 25 V 0805
C029	2310375	Ceramic cap.	39 p	5 % 50 V 0805
C025	2320043	Ceramic cap.	22 p	5 % 50 V 0603

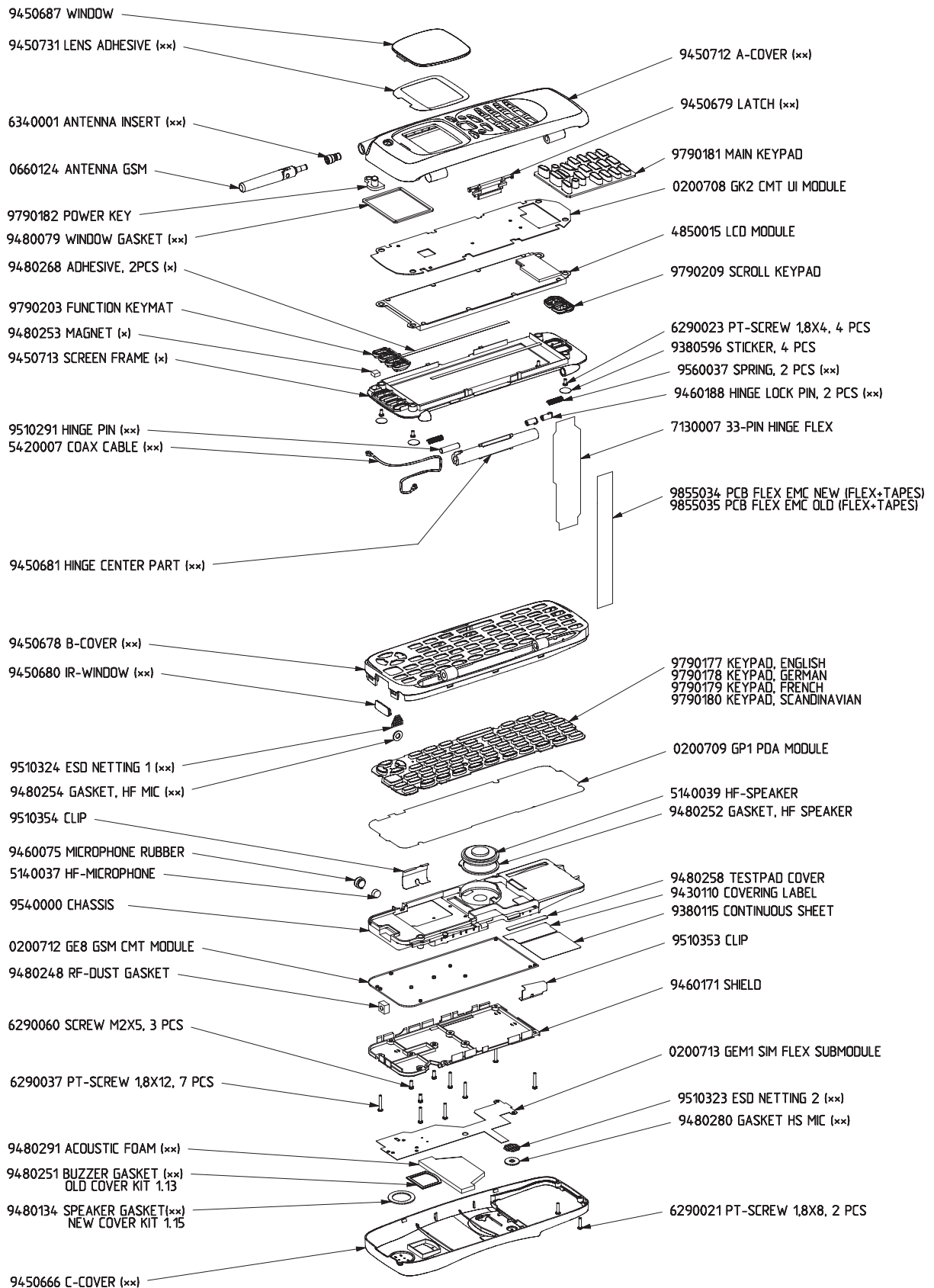
C026	2320043	Ceramic cap.	22 p	5 % 50 V 0603	
C027	2320043	Ceramic cap.	22 p	5 % 50 V 0603	
C028	2320043	Ceramic cap.	22 p	5 % 50 V 0603	
C011	2320107	Ceramic cap.	10 n	5 % 50 V 0603	
C001	2604248	Tantalum cap.	4.7 u	20 % 16 V 6.0x3.2x2.5	
C002	2604248	Tantalum cap.	4.7 u	20 % 16 V 6.0x3.2x2.5	
C010	2604431	Tantalum cap.	10 u	20 % 16 V 6.0x3.2x2.5	
L002	3643041	Chip coil	2 n 7	+0N2 Q=42/450M 0805	
L001	3643043	Chip coil	3 n 3	+0N2 Q=38/450M 0805	
V036	4111824	Diode	BAS16	75 V 250 mA 6 ns SOT23	
V040	4200811	Transistor	BC849C	nnp 30 V 0.1 A SOT23	
V041	4200836	Transistor	BCX19	nnp 50 V 0.5 A SOT23	
V042	4200836	Transistor	BCX19	nnp 50 V 0.5 A SOT23	
V043	4200836	Transistor	BCX19	nnp 50 V 0.5 A SOT23	
V044	4200836	Transistor	BCX19	nnp 50 V 0.5 A SOT23	
	4850038	IC, lcd	42dotm 3x7sgm 57ind	DSL-12 EU	
V011	4864388	Led	Green	0603	
V012	4864388	Led	Green	0603	
V013	4864388	Led	Green	0603	
V014	4864388	Led	Green	0603	
V015	4864388	Led	Green	0603	
V016	4864388	Led	Green	0603	
V017	4864388	Led	Green	0603	
V018	4864388	Led	Green	0603	
V019	4864388	Led	Green	0603	
V020	4864388	Led	Green	0603	
V021	4864388	Led	Green	0603	
V022	4864388	Led	Green	0603	
V023	4864388	Led	Green	0603	
V024	4864388	Led	Green	0603	
V026	4864388	Led	Green	0603	
V027	4864388	Led	Green	0603	
V028	4864388	Led	Green	0603	
V029	4864388	Led	Green	0603	
V030	4864388	Led	Green	0603	
V031	4864388	Led	Green	0603	
V032	4864388	Led	Green	0603	
V033	4864388	Led	Green	0603	
V034	4864388	Led	Green	0603	
V038	4864388	Led	Green	0603	
S036	5200120	Push button switch	6.4x5.2 smd		
X035	5429003	SM, coax conn recep	50r 3ghz 5x4		5x4.5

X010	5469015	SM, flex conn sfv 12pol p0.5 loc	LOCK
X001	5469021	SM, flex conn 33pol po.5 l.conta	L.CONTACT
	9457468	Lightguide rae-1 dmc00310	
X040	9510168	Antenna contact b11114	
	9795025	Keydome diam 5.6x20/sheet rae-1	RAE-1
	9854198	PCB GK2-1 165.0X50.9X0.6 M4 2/PA	

Simflex Sub-module – GEM1

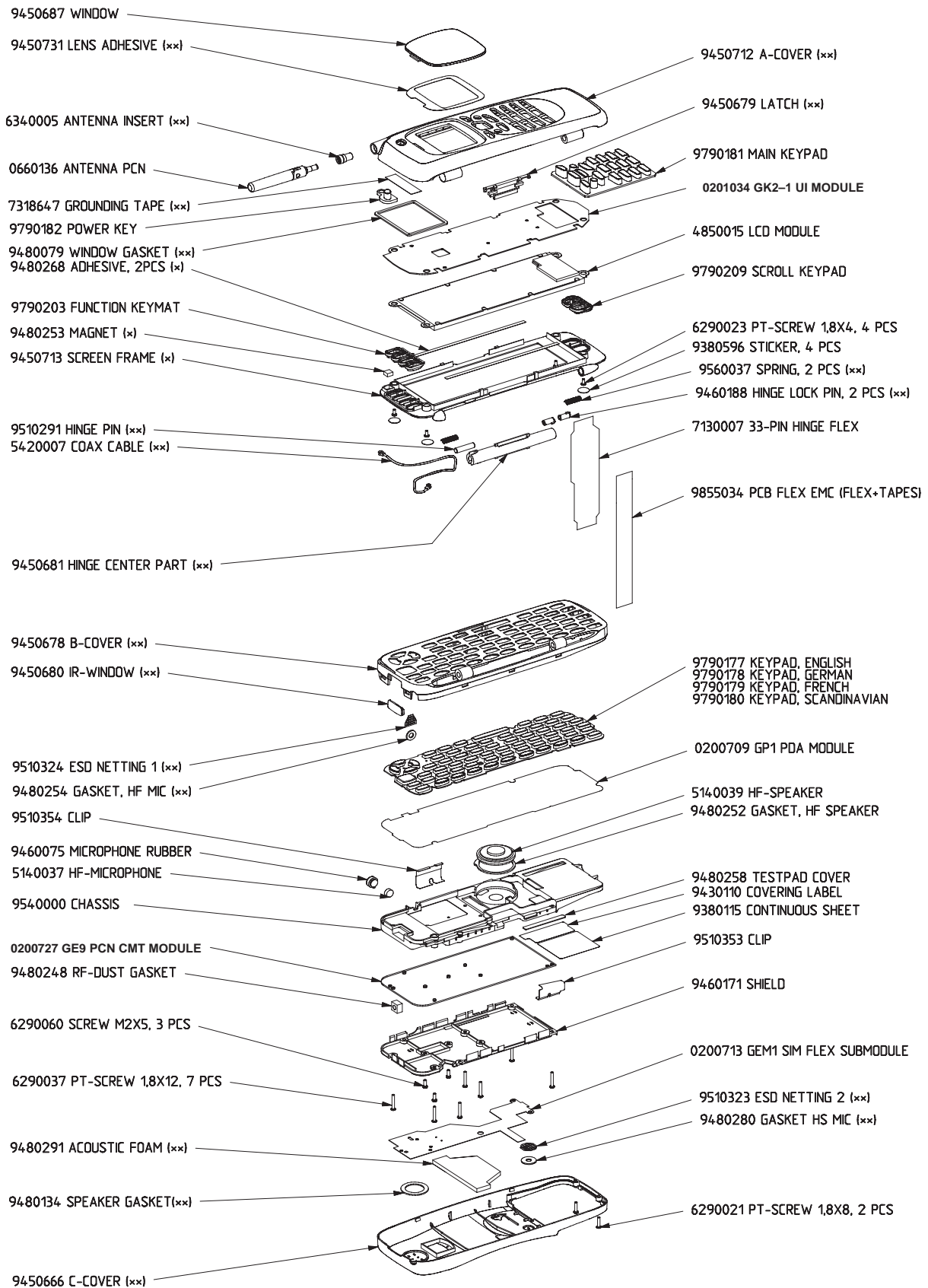
EDMS pn 0200713 issue 2.10

Item	Code	Description
B001	5140576	Dynamic receiver 32r
B002	5140458	Mic+wire 61.5+-2db1khz/2k/3v d6x3
B003	5140029	SM, d buzzer 94db 5vdc40r
X002	5409039	SM, sim card conn. 2x3+fix. hole
	7310007	Esd tape dmd00741
	9460100	Mic boot b10538
	9480103	Speaker pad2
	9854120	FLEX PCB GEM1



(x) 9450685 SCREEN FRAME SUBASSEMBLY
(xx) 9480266 COVER KIT SUBASSEMBLY

Mechanical Assy/Parts RAE-1N



(*) 9450685 SCREEN FRAME SUBASSEMBLY
 (**) 9480343 PCN COVER KIT SUBASSEMBLY

Mechanical Assy/Parts RAK-1N

This page intentionally left blank.